

N  **BBY** **GARDEN**

The new project **Nobby Garden** is a stylish residence with an emphasis on a measured rhythm of life and rest. The ideal combination of a pleasant price and high quality of the Nordic property company is realized in competent functional layouts of apartments and an excellent set of facilities, which are created both for rest and for a comfortable permanent residence with the whole family.

Nobby Garden is located in one of the quietest and comfortable areas of Alanya - Avsallar. The area is known for its sandy beaches and the natural beauty of its coniferous forests. There is all the necessary urban facilities: cafes and restaurants, chain supermarkets and a farmer's market on Wednesdays, a public hospital and private clinics, pharmacies, kindergartens, schools, banks etc.

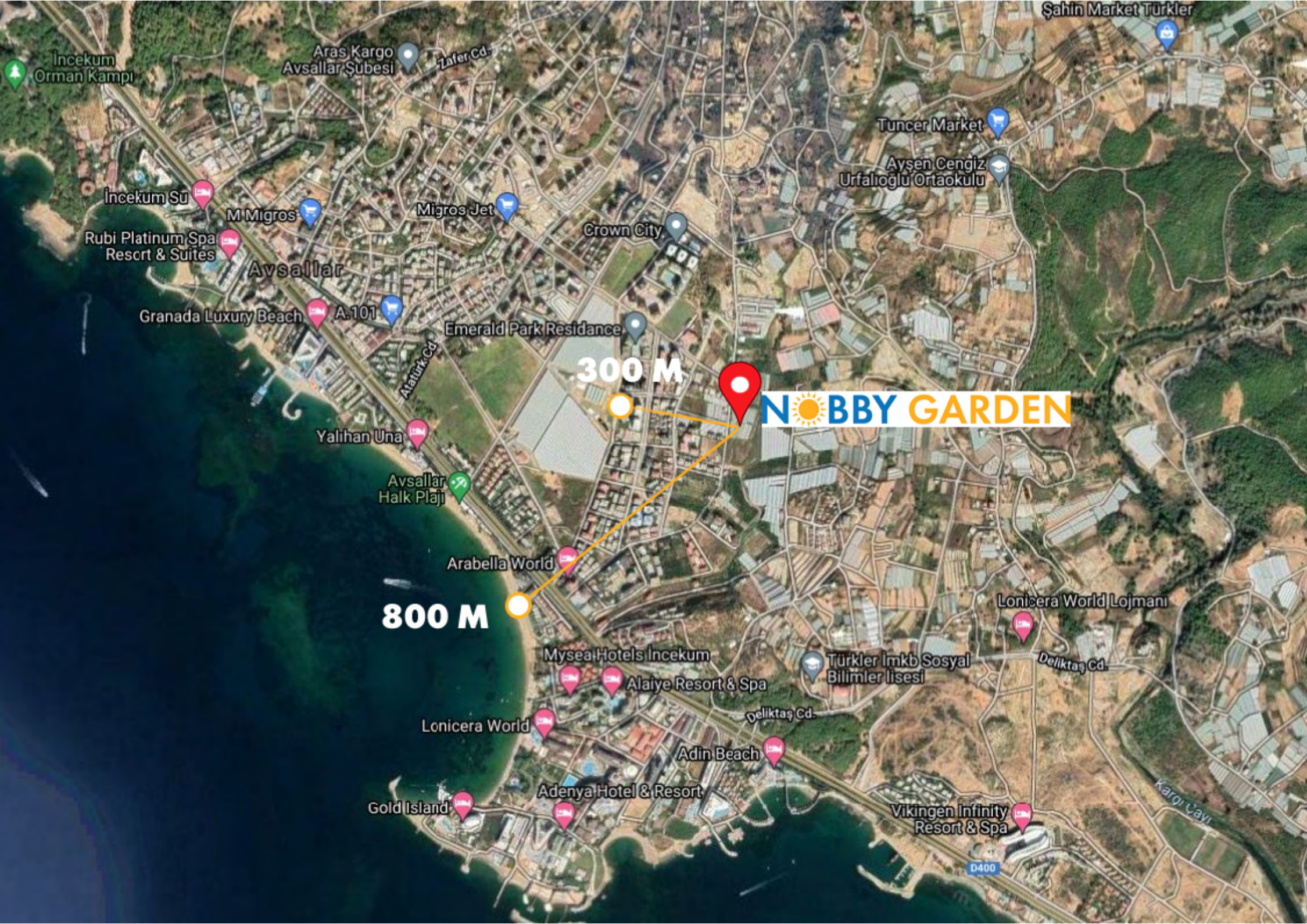
- Distance to Antalya Airport: 90 км
- Distance to Gazipasa Airport: 60 км
- Distance to the center of Alanya: 20 км
- Distance to the sea: 800 m
- Distance to shops, cafes, restaurants and other social infrastructure: 300 m
- Distance to Farmers Market: 650 m

Construction will begin in **September 2022**

Completion of construction is scheduled for **August 31, 2023.**

Land area: 6000 m²

LOCATION



Incekum Orman Kampı

Aras Kargo Aysallar Şubesi

Zafer Cd.

Şahin Market Türkler

Tuncer Market

Aysen Cengiz Urfalioğlu Ortaokulu

Incekum Sü

M Migros

Migros Jet

Crown City

Rubi Platinum Spa Rescrt & Suites

Aysallar

Granada Luxury Beach

A.101

Emerald Park Residence

300 M

NOBBY GARDEN

Yalihan Una

Aysallar Halk Plajı

Arabella World

800 M

Lonicera World Lojmanı

Mysea Hotels Incekum

Alaiye Resort & Spa

Türkler İmkb Sosyal Bilimler lisesi

Lonicera World

Deliktaş Cd.

Adin Beach

Adenya Hotel & Resort

Vikingen Infinity Resort & Spa

Gold Island

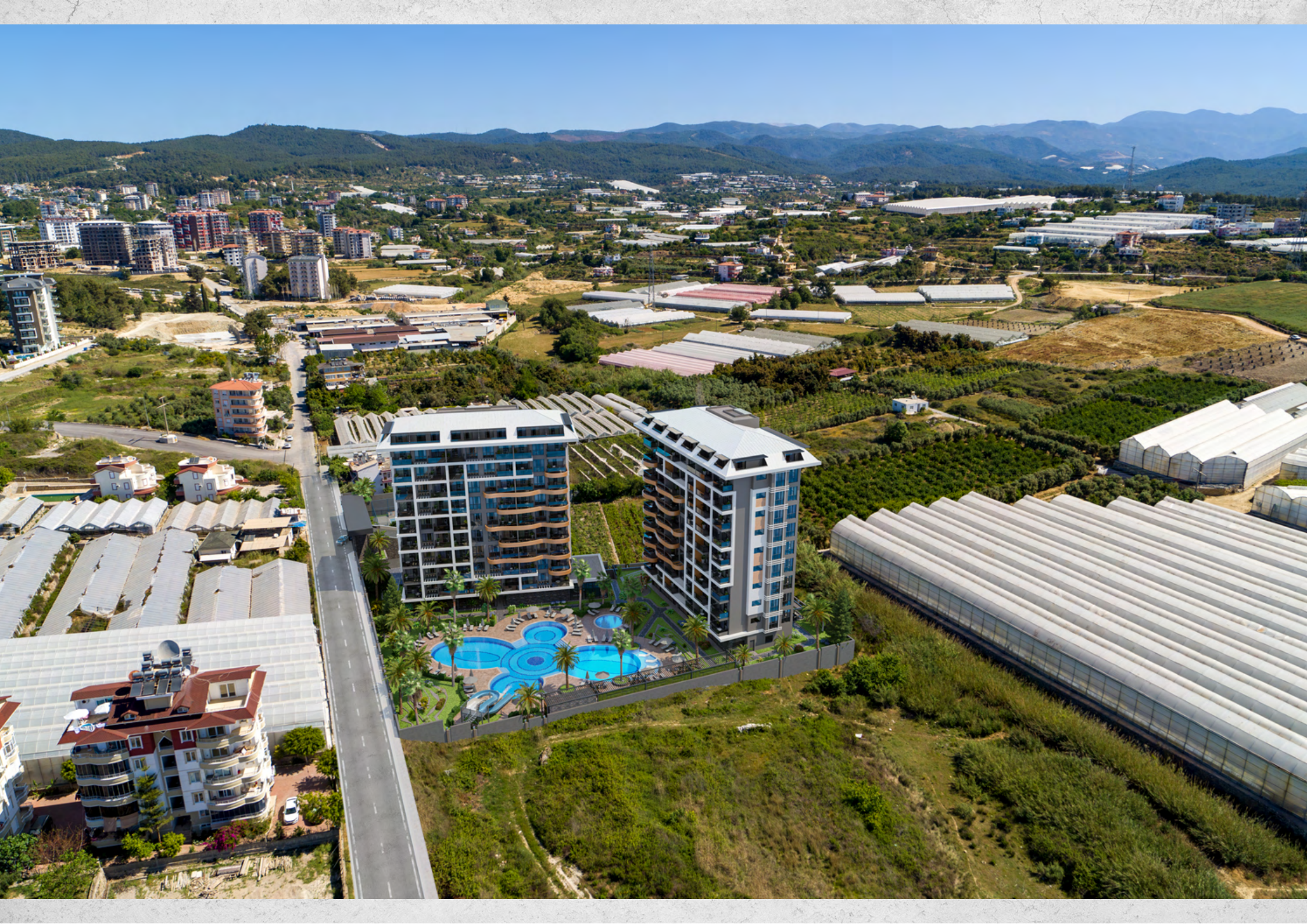
D400

Kargı Çayı





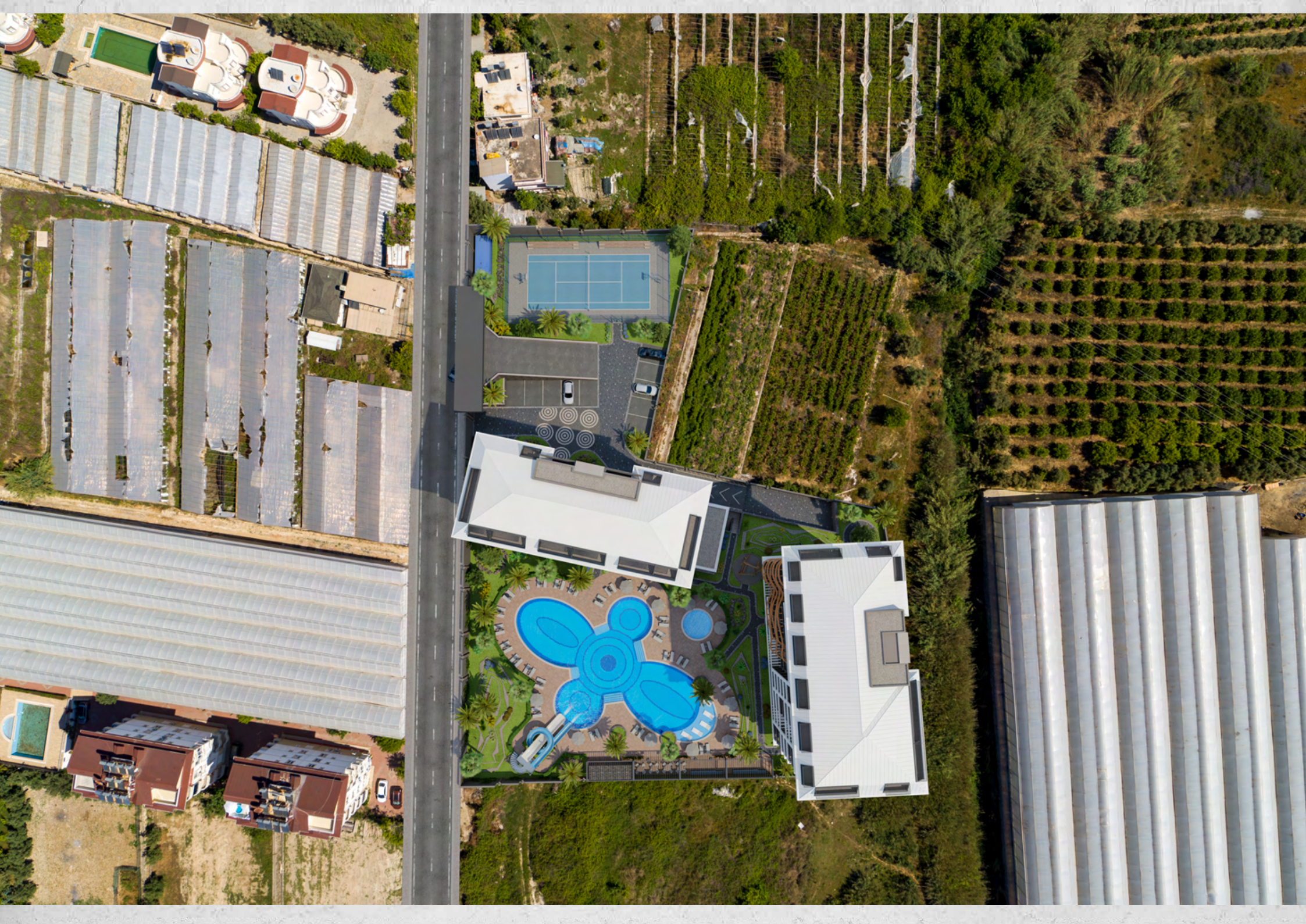
NABBY GARDEN

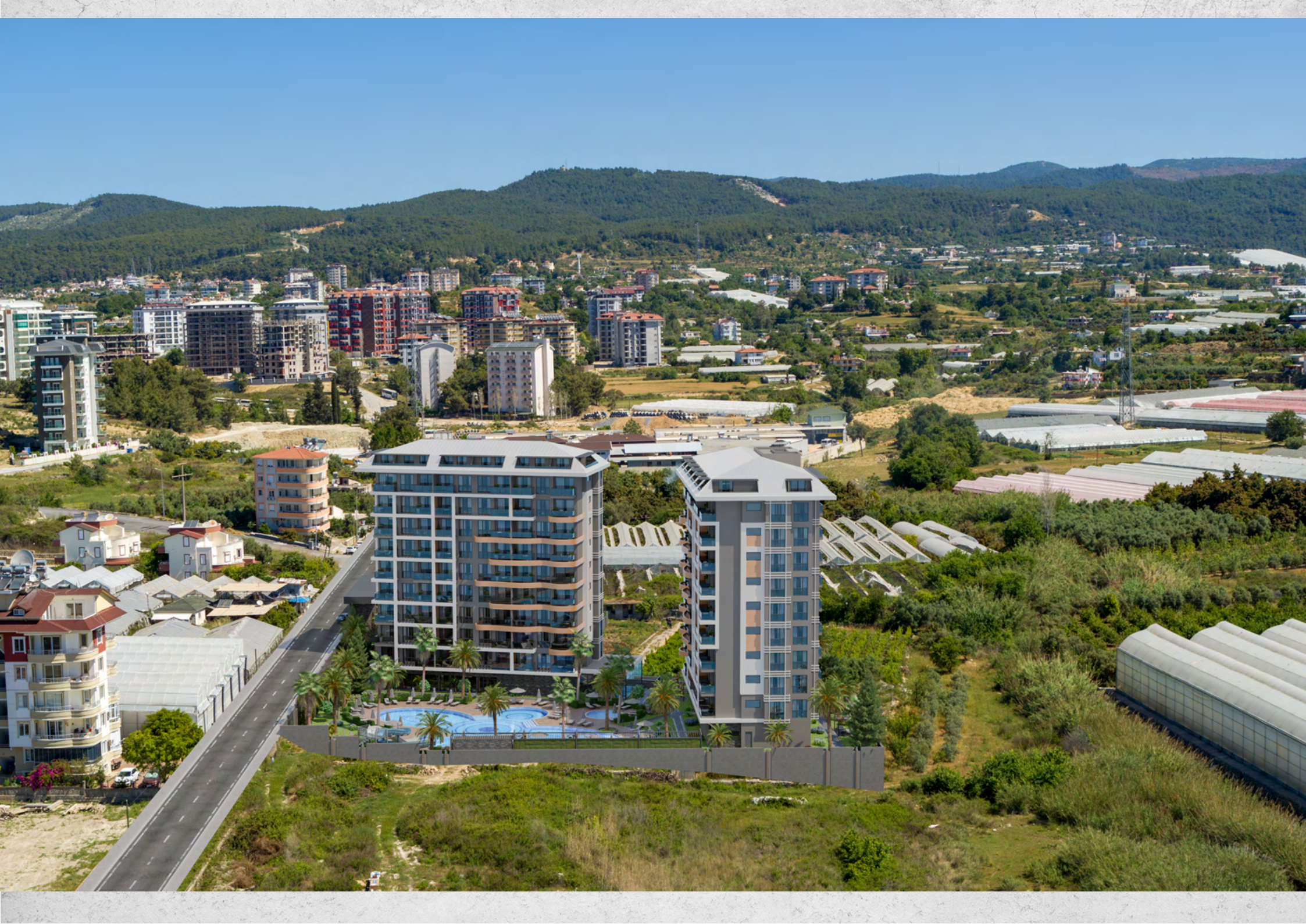














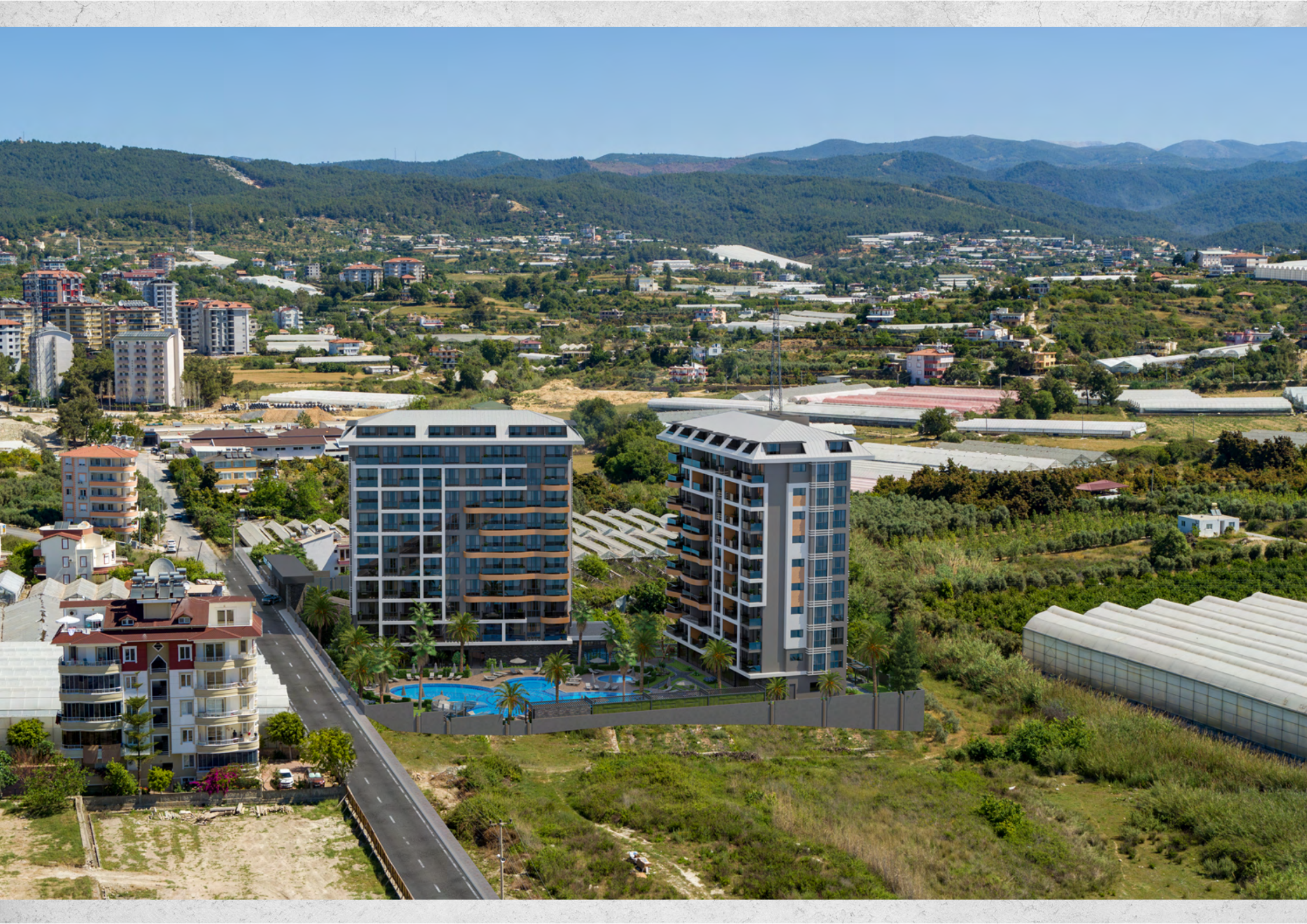






















NOBBY GARDEN



FACILITIES

The facilities of the **Nobby Garden** residence will not leave you indifferent!
On the territory of the residence there are next elements:

- Outdoor swimming pool with water sliders
- Children's swimming pool
- Indoor heated pool with children's section
- Gym
- Turkish bath (hamam)
- Sauna
- Steam room
- Massage room
- Lobby and lounge area with billiards
- Barbecue
- Mini cinema

- Playground
- Children's playroom
- Landscaped garden
- Outdoor parking
- Covered parking
- Caretaker
- Elevator
- Electricity generator
- Security camera system
- Satellite TV
- Tennis



GARDEN



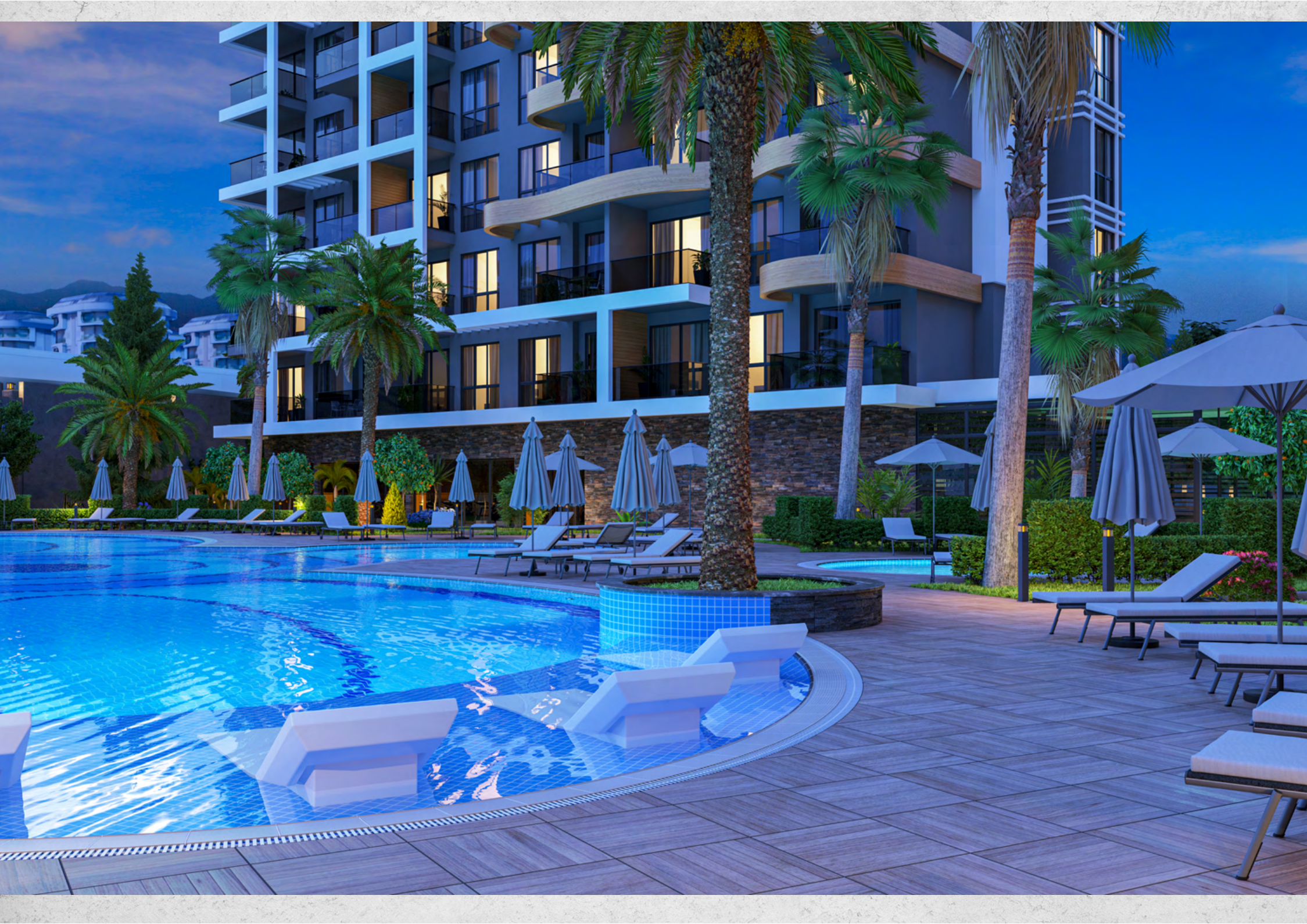




































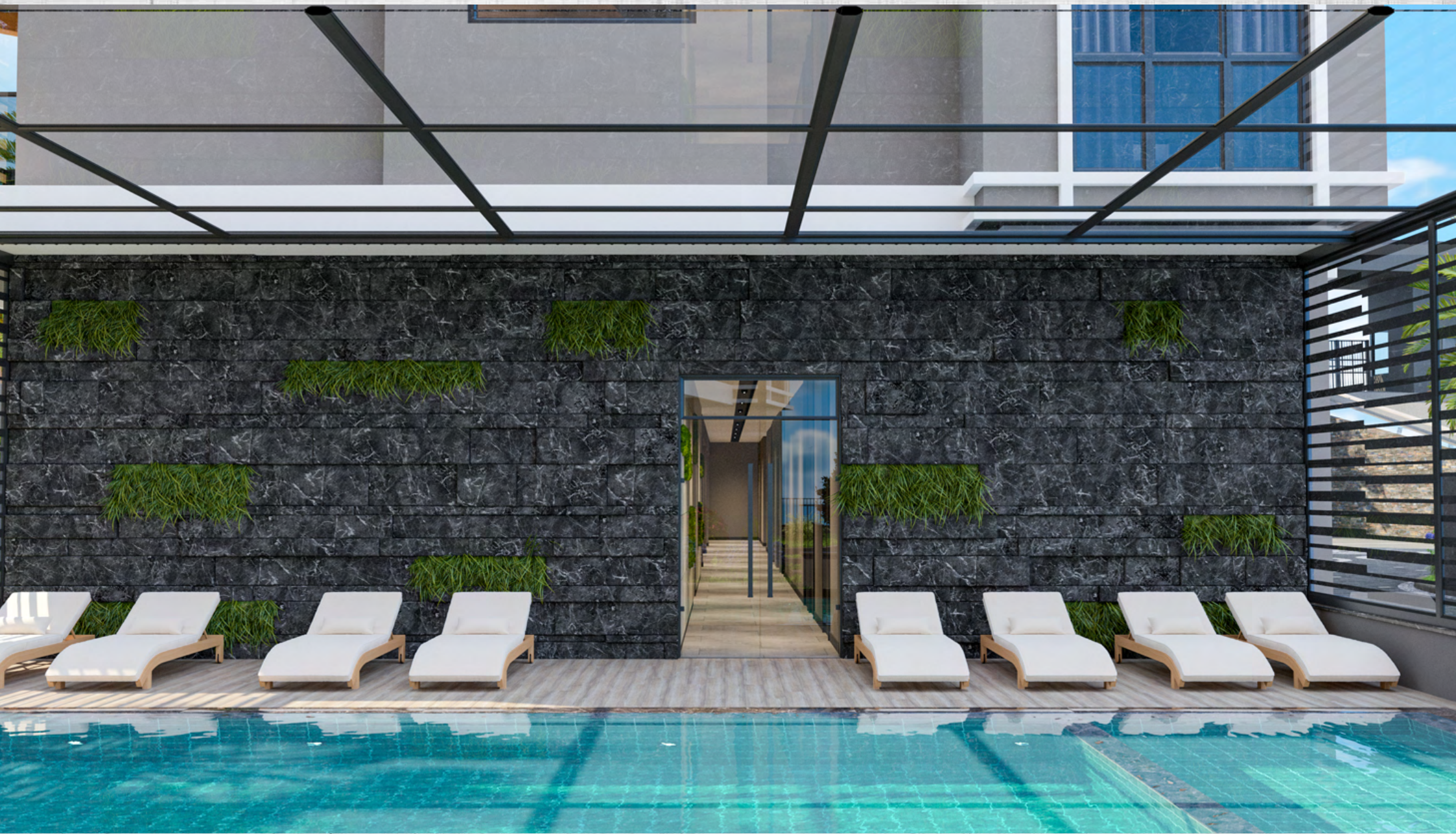






















APARTMENTS

The **Nobby Garden** residence consists of two blocks with 117 apartments of various layouts. The modern design of the project was developed by the leading architectural firm of Alanya.

TYPES OF LAYOUTS

- 1 + 1 (with one bedroom);
- 2 + 1 (two bedrooms);
- Duplex 2 + 1 (two-level apartments with two bedrooms);
- Duplexes 3 + 1 (duplex apartments with three bedrooms);
- Duplexes 4 + 1 (duplex apartments with four bedrooms).

QUALITY STANDARDS AND CHARACTERISTICS

Residential blocks **Nobby Garden** were built in accordance with European standards using modern technologies and high quality materials. Apartments are being sold with a full finishing

- Ceiling height 2,95 m;
- Steel entrance door, high quality interior doors;
- Kitchen set with granite worktops;
- High quality bathroom equipment;
- Fully equipped bathrooms with showers cabin;
- Aluminium windows with double glazing;
- Walls: washable paint
- Floor covering - ceramic tiles;
- Video intercom;
- Sockets for the Internet and IP TV



ONE-BEDROOM APARTMENTS













TWO-BEDROOM APARTMENTS





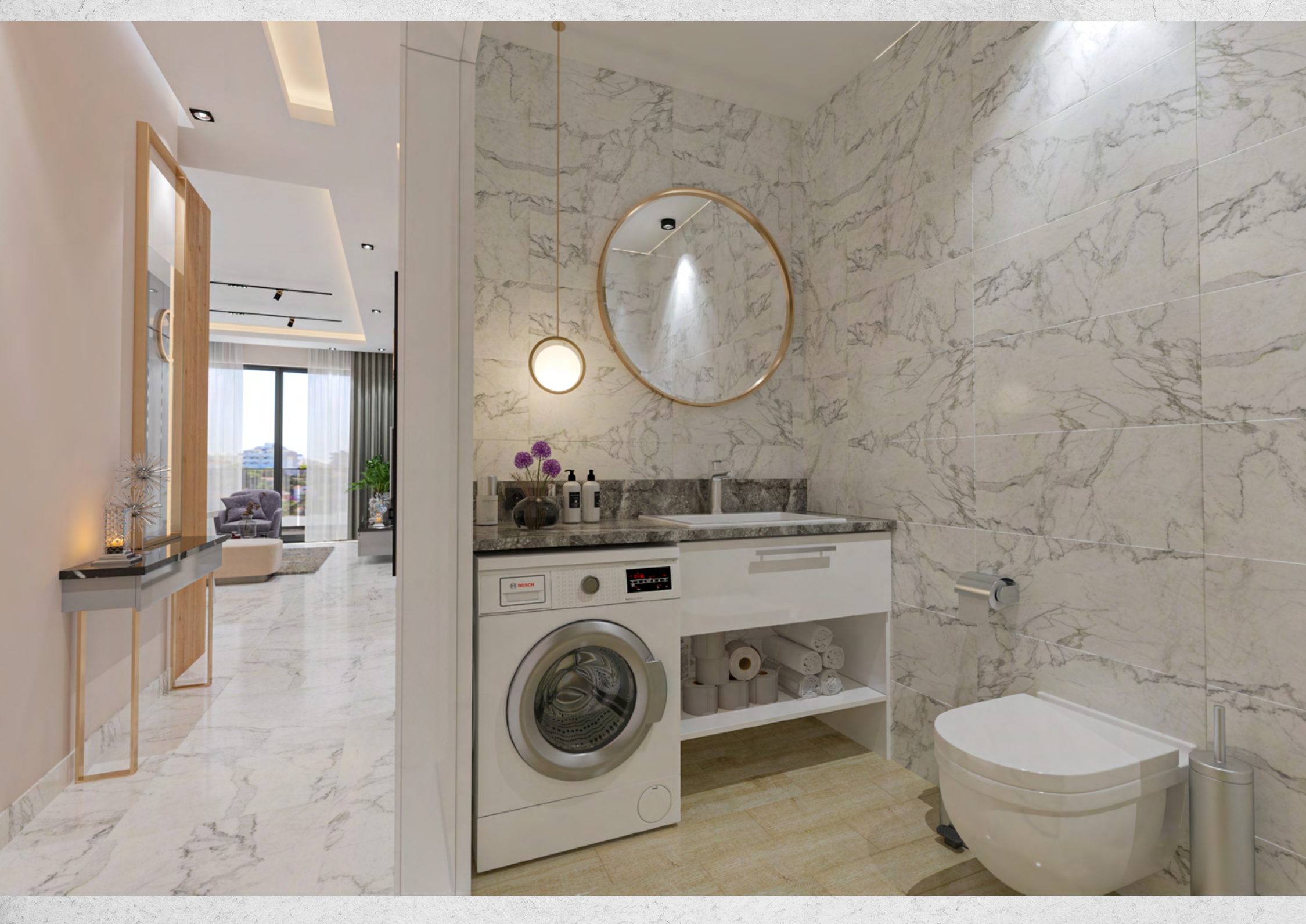








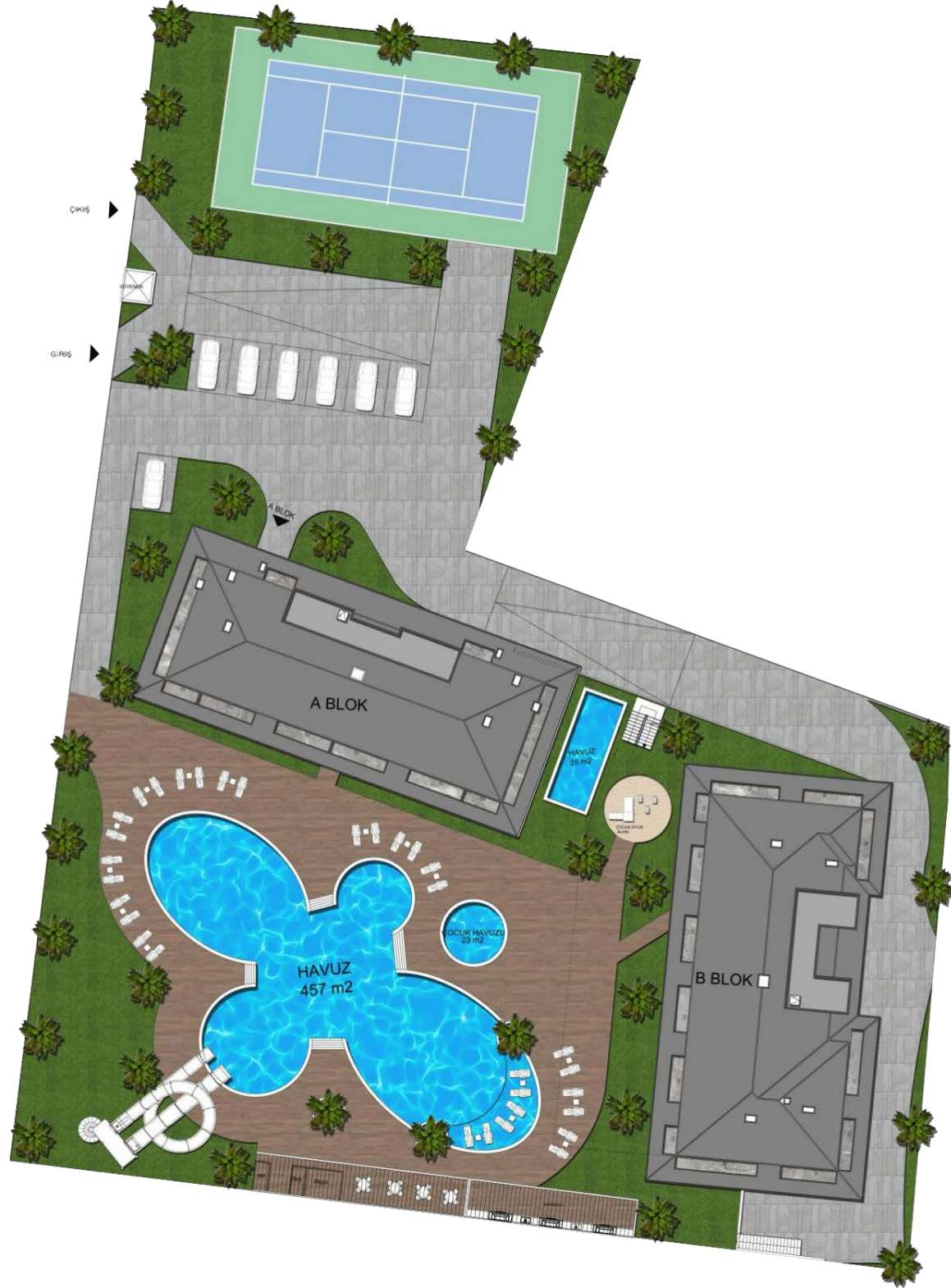








FLOORPLANS





BLOCK A



DAİRE BRÜT M² (2+1)
73.50 M² + 8.50 M² (BALKON)
= 82.00 M²

DAİRE BRÜT M² (1+1)
40.00 M² + 7.00 M² (BALKON)
= 47.00 M²

DAİRE BRÜT M² (1+1)
40.00 M² + 7.00 M² (BALKON)
= 47.00 M²

DAİRE BRÜT M² (1+1)
40.00 M² + 7.00 M² (BALKON)
= 47.00 M²

DAİRE BRÜT M² (1+1)
40.00 M² + 7.00 M² (BALKON)
= 47.00 M²

DAİRE BRÜT M² (2+1)
73.50 M² + 8.50 M² (BALKON)
= 82.00 M²

+ 19.00 M² (ORTAK ALAN)
= 101.00 M²

+ 11.00 M² (ORTAK ALAN)
= 58.00 M²

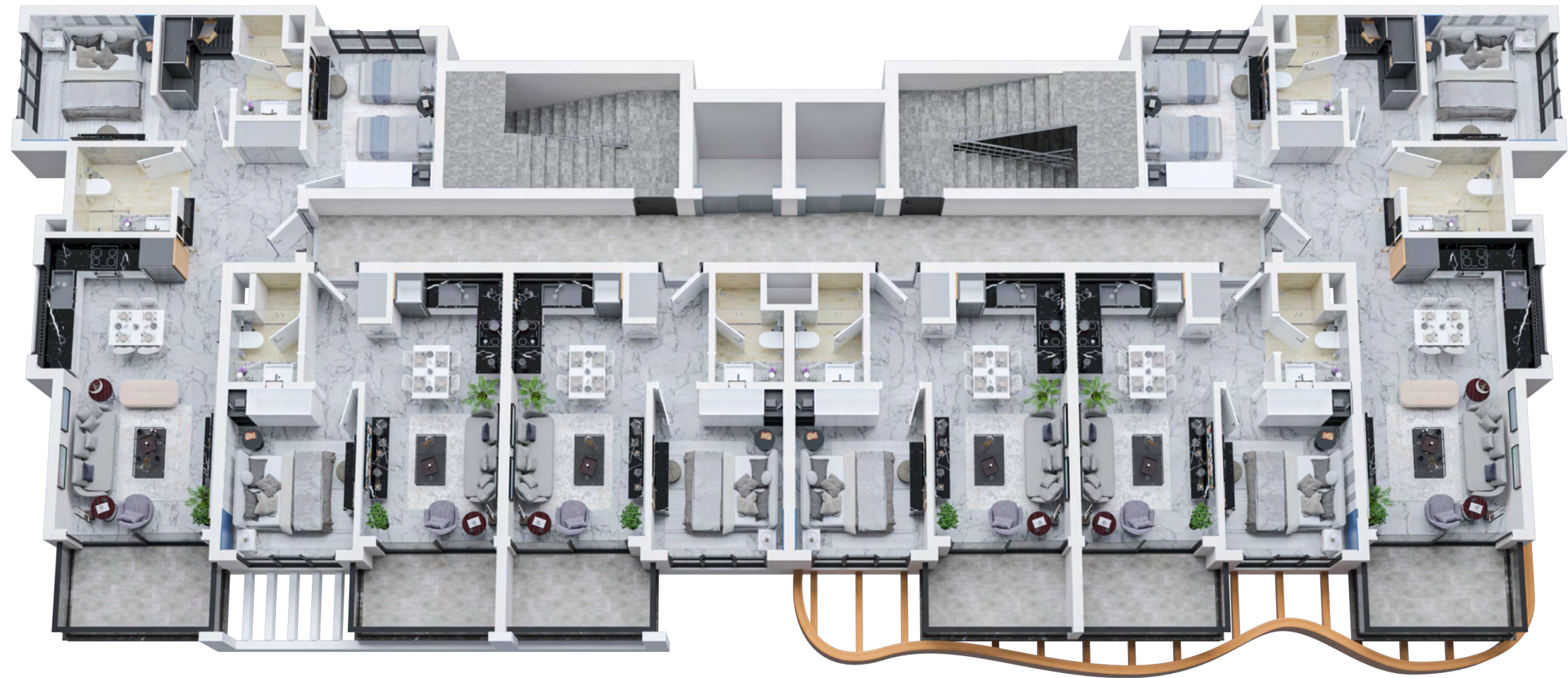
+ 11.00 M² (ORTAK ALAN)
= 58.00 M²

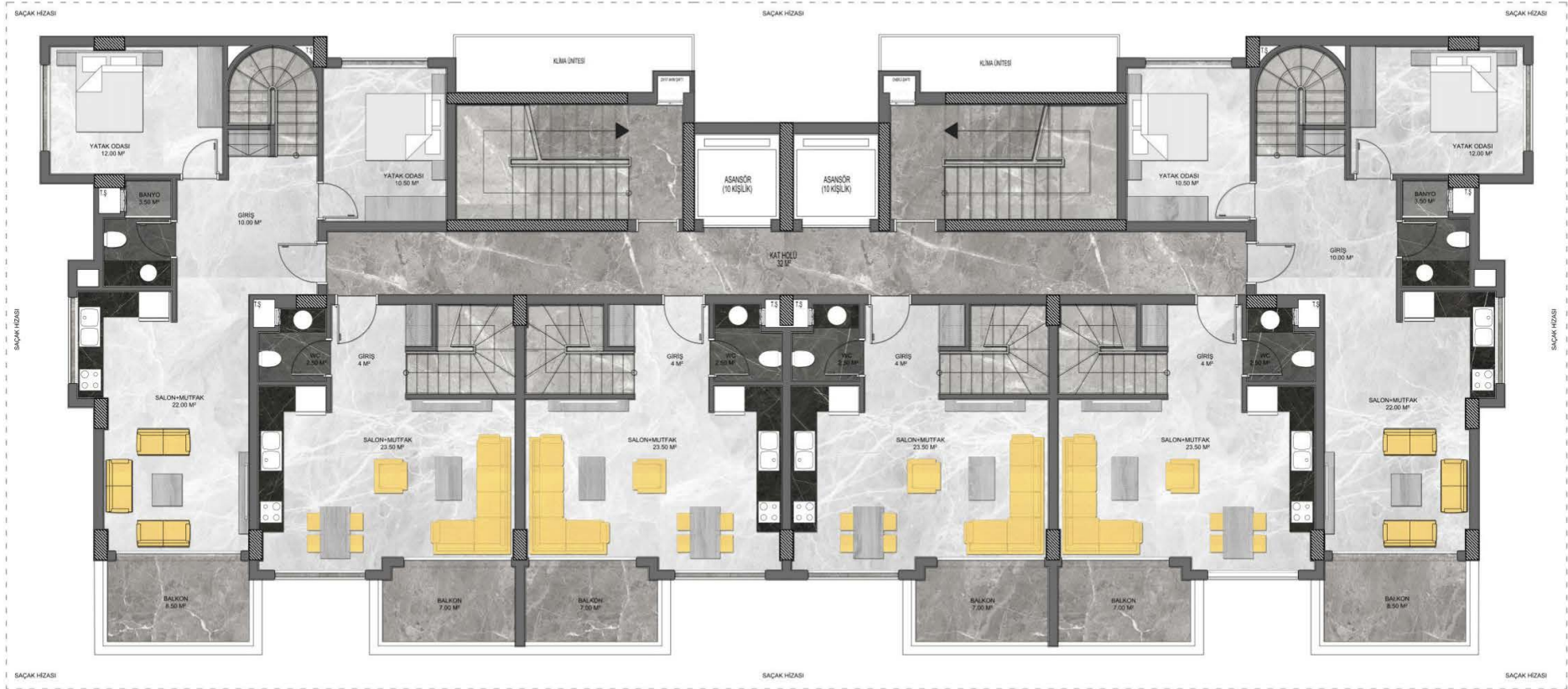
+ 11.00 M² (ORTAK ALAN)
= 58.00 M²

+ 11.00 M² (ORTAK ALAN)
= 58.00 M²

+ 19.00 M² (ORTAK ALAN)
= 101.00 M²

A BLOK NORMAL KAT PLANI





DUBLEKS DAİRE BRÜT M² (4+1)
138.50 M² + 29.00 M² (BALKON / TERAS)
= 167.50 M²

DUBLEKS DAİRE BRÜT M² (2+1)
76.00 M² + 13.00 M² (BALKON / TERAS)
= 89.00 M²

DUBLEKS DAİRE BRÜT M² (2+1)
76.00 M² + 13.00 M² (BALKON / TERAS)
= 89.00 M²

DUBLEKS DAİRE BRÜT M² (2+1)
76.00 M² + 13.00 M² (BALKON / TERAS)
= 89.00 M²

DUBLEKS DAİRE BRÜT M² (2+1)
76.00 M² + 13.00 M² (BALKON / TERAS)
= 89.00 M²

DUBLEKS DAİRE BRÜT M² (4+1)
138.50 M² + 29.00 M² (BALKON / TERAS)
= 167.50 M²

+ 19 M² (ORTAK ALAN)
= 186.50 M²

+ 11.00 M² (ORTAK ALAN)
= 100.00 M²

+ 11.00 M² (ORTAK ALAN)
= 100.00 M²

+ 11.00 M² (ORTAK ALAN)
= 100.00 M²

+ 11.00 M² (ORTAK ALAN)
= 100.00 M²

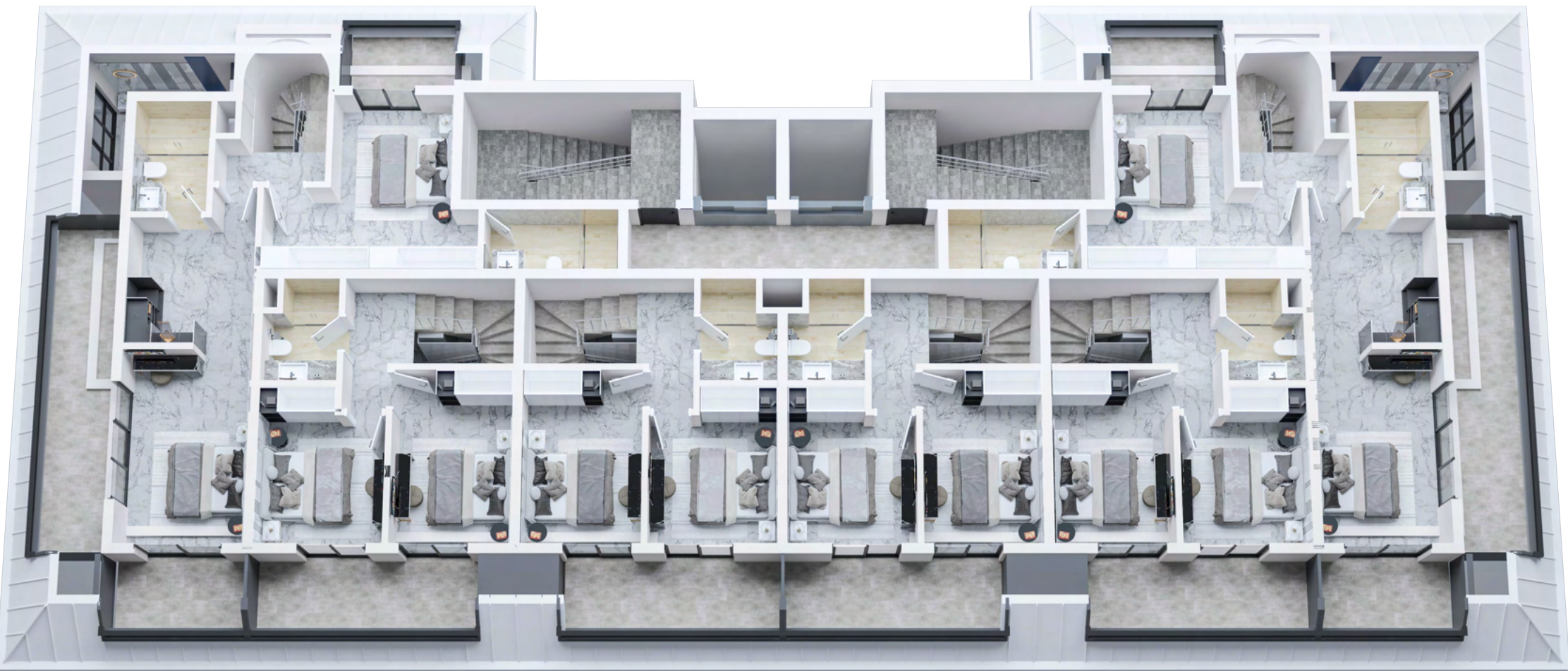
+ 19 M² (ORTAK ALAN)
= 186.50 M²

A BLOK DUBLEKS KAT PLANI

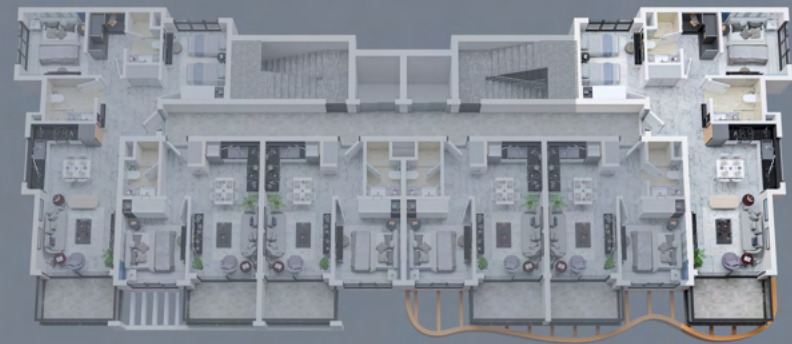


A BLOK ÇATI KAT PLANI

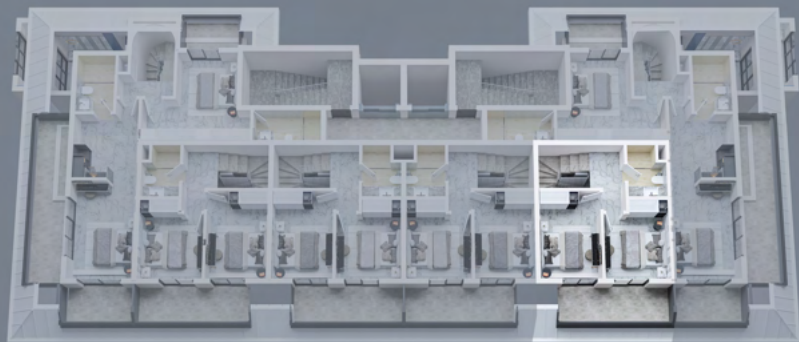




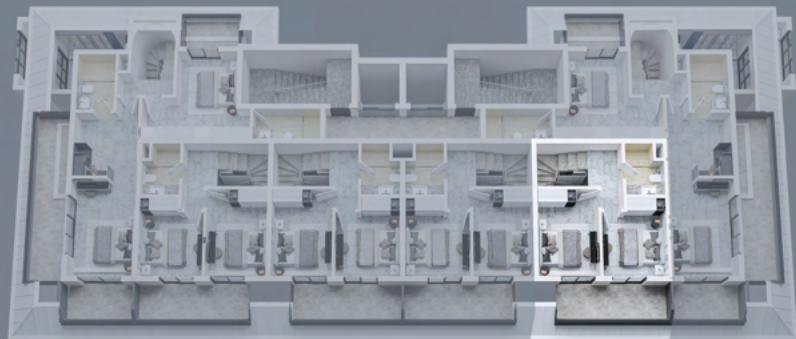
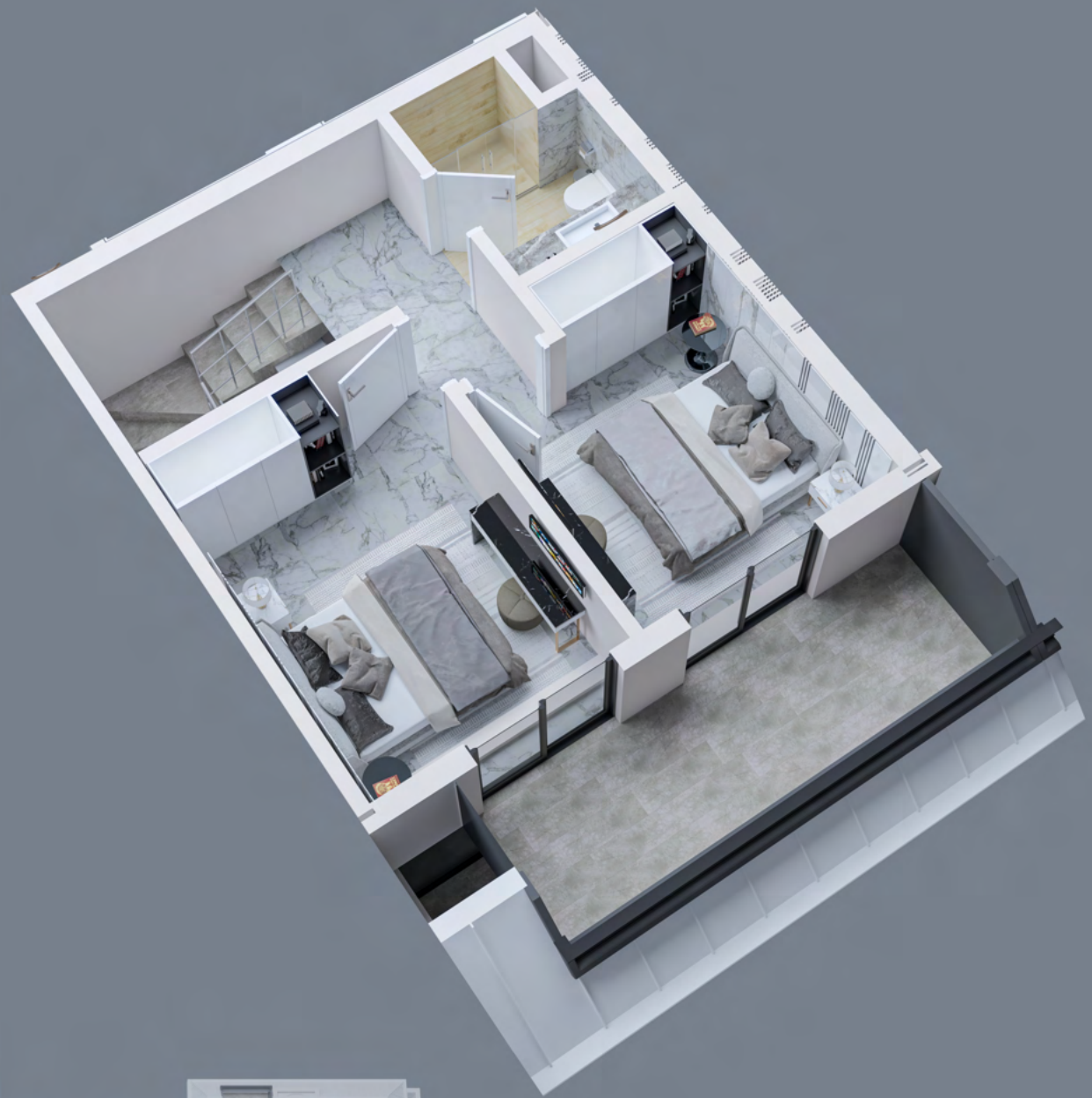




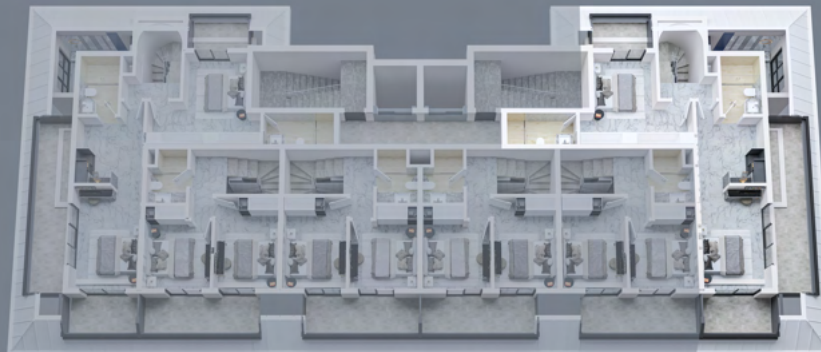












BLOCK B



DAİRE BRÜT M² (1+1)
40.50 M² + 7.00 M² (BALKON)
= 47.50 M²

+ 10.50 M² (ORTAK ALAN)
= 58.00 M²



DAİRE BRÜT M² (2+1)
73.50 M² + 8.50 M² (BALKON)
= 82.00 M²

+ 18.50 M² (ORTAK ALAN)
= 100.50 M²

DAİRE BRÜT M² (1+1)
40.00 M² + 7.00 M² (BALKON)
= 47.00 M²

+ 10.50 M² (ORTAK ALAN)
= 57.50 M²

DAİRE BRÜT M² (1+1)
40.00 M² + 7.00 M² (BALKON)
= 47.00 M²

+ 10.50 M² (ORTAK ALAN)
= 57.50 M²

DAİRE BRÜT M² (1+1)
40.00 M² + 7.00 M² (BALKON)
= 47.00 M²

+ 10.50 M² (ORTAK ALAN)
= 57.50 M²

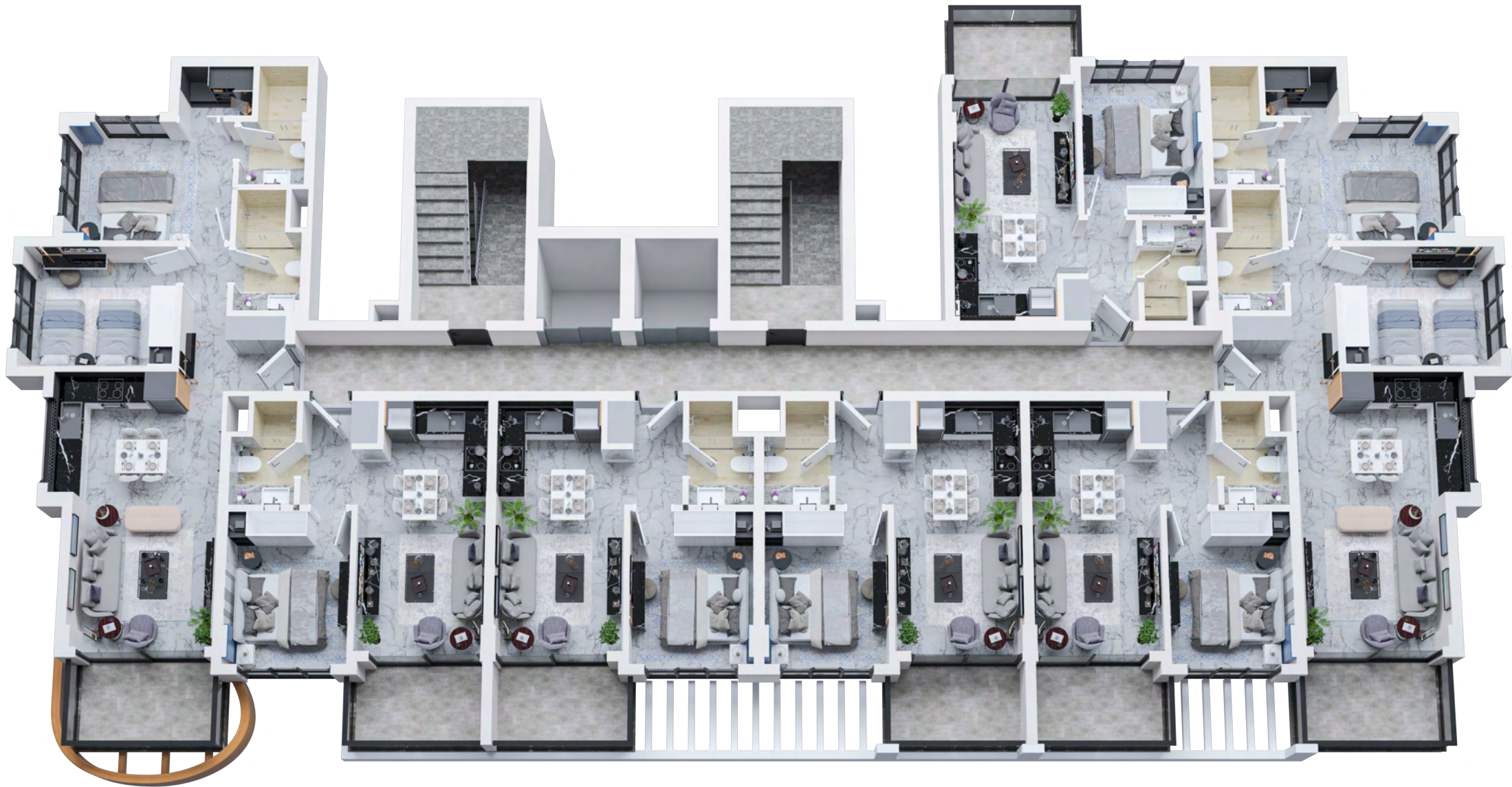
DAİRE BRÜT M² (1+1)
40.00 M² + 7.00 M² (BALKON)
= 47.00 M²

+ 10.50 M² (ORTAK ALAN)
= 57.50 M²

DAİRE BRÜT M² (2+1)
73.50 M² + 8.50 M² (BALKON)
= 82.00 M²

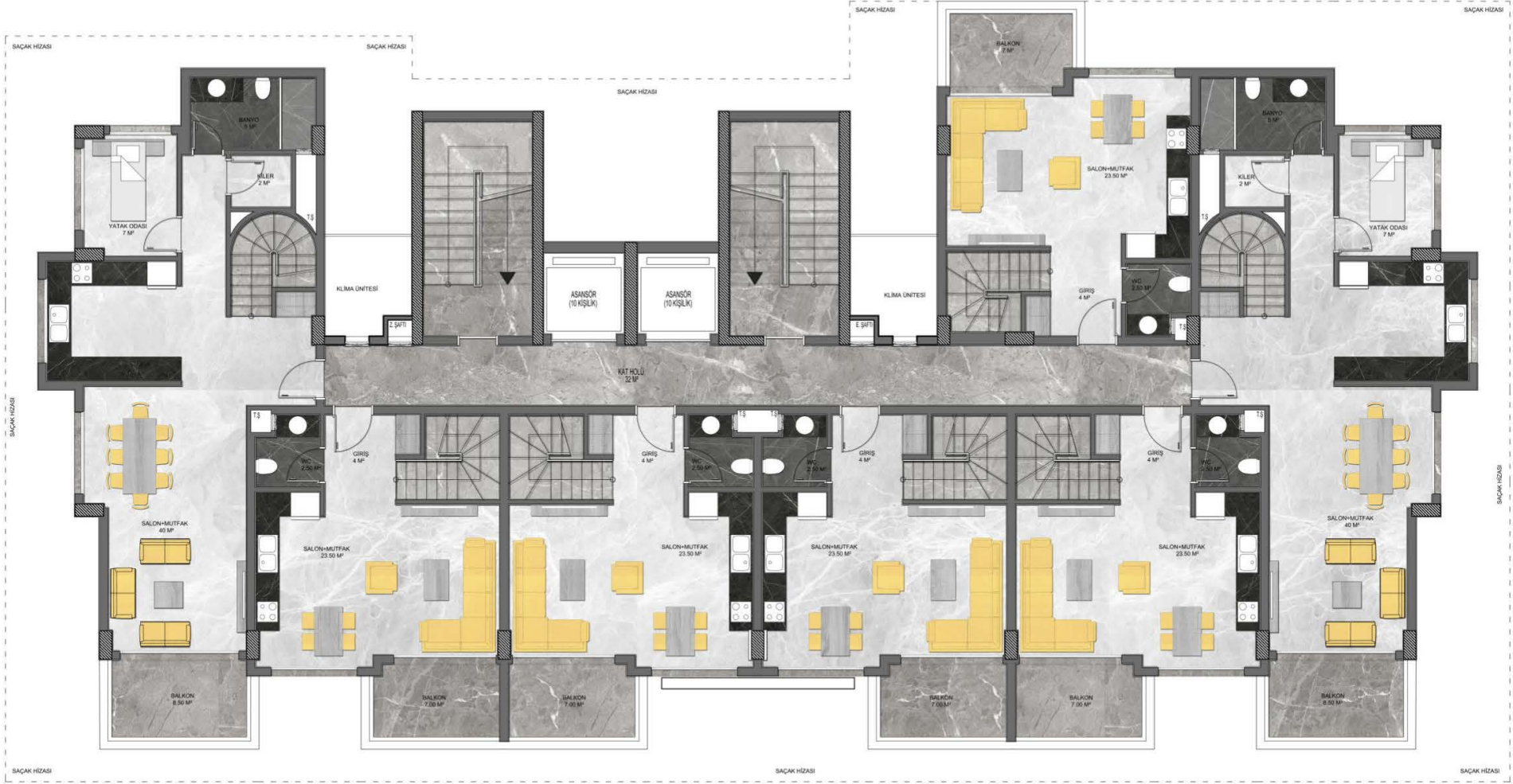
+ 18.50 M² (ORTAK ALAN)
= 100.50 M²

B BLOK NORMAL KAT PLANI



DUBLEKS DAİRE BRÜT M² (2+1)
101.00 M² + 15.00 M² (BALKON / TERAS)
= 116.00 M²

+ 10.50 M² (ORTAK ALAN)
= 126.50 M²



DUBLEKS DAİRE BRÜT M² (3+1)
146.00 M² + 33.00 M² (BALKON / TERAS)
= 179.00 M²

+ 18.50 M² (ORTAK ALAN)
= 197.50 M²

DUBLEKS DAİRE BRÜT M² (2+1)
76.00 M² + 12.00 M² (BALKON / TERAS)
= 88.00 M²

+ 10.50 M² (ORTAK ALAN)
= 98.50 M²

DUBLEKS DAİRE BRÜT M² (2+1)
76.00 M² + 12.00 M² (BALKON / TERAS)
= 88.00 M²

+ 10.50 M² (ORTAK ALAN)
= 98.50 M²

DUBLEKS DAİRE BRÜT M² (2+1)
76.00 M² + 12.00 M² (BALKON / TERAS)
= 88.00 M²

+ 10.50 M² (ORTAK ALAN)
= 98.50 M²

DUBLEKS DAİRE BRÜT M² (2+1)
76.00 M² + 12.00 M² (BALKON / TERAS)
= 88.00 M²

+ 10.50 M² (ORTAK ALAN)
= 98.50 M²

DUBLEKS DAİRE BRÜT M² (3+1)
133.00 M² + 31.50 M² (BALKON / TERAS)
= 164.50 M²

+ 18.50 M² (ORTAK ALAN)
= 183.00 M²

B BLOK DUBLEKS KAT PLANI



B BLOK ÇATI KAT PLANI



