



Feel the luxury



TURKEY

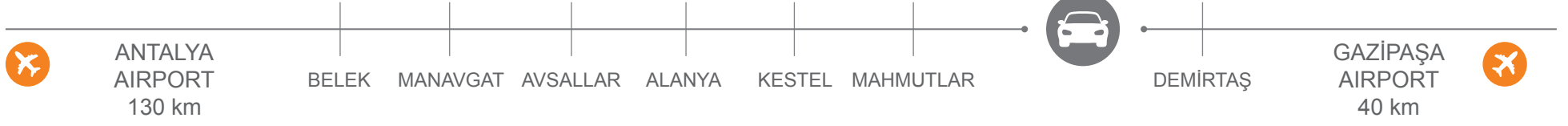
ALANYA



The shining star of the Mediterranean, Alanya, is the perfect tourist destination with its long, sandy beaches, historical artifacts, natural beauty, fish restaurants, contemporary hotels, cafés, bars and discos. Alanya welcomes you with its 13-centuries old Seljuk Castle, which is situated like a crown at top of Alanya's peninsula. An unprecedented shipyard and the monumental Kizil Kule are the worth seeing historical places besides of the impressive castle. The summit of the Alanya peninsula is the castle, which is the most beheld place to have a panoramic view over the Alanya scenery. There are cafes and restaurants serving the people who want to enjoy this magical scenery. In gift shops carefully made souvenirs and ornamentals will make your day unforgettable as well as restaurants and cafes. The Alanya observation terrace is again the visually attractive place to have this panoramic view. You can also enjoy an extra comfort by visiting one of the cafes and restaurants in the terrace. Apart from watching the panoramic view from the terrace you can also have a picnic in green fragrant gardens.

Cafés are surrounding the Alanya harbor and are creating decent day and night pleasures for you. Along the harbor road you will find boutiques selling textile, leather, and jewelry. On the way to the harbor you will find the painters who can make your portrait or any picture you want on their stands. If you are cave explorer you must visit Dimçay cave and Damlatas cave. Next to the Damlatas cave you will find the Alanya ethnographic museum. Daily boat trips are taking you to 3 different caves which are the Fosforlu cave (phosphorous Cave) with phosphorescent rocks, the Asiklar cave (Lovers Cave) and the Kizlar cave (Girls Cave) where the pirates used to keep women captive. Dimçay valley east of Alanya is an indispensable relaxing area for the people in hot Mediterranean summers. In that valley away from the heat you can relax in shaded shelters, swim in the cold water of the Dimçay river and test the delicious fish in restaurants which are built in harmony with the nature.

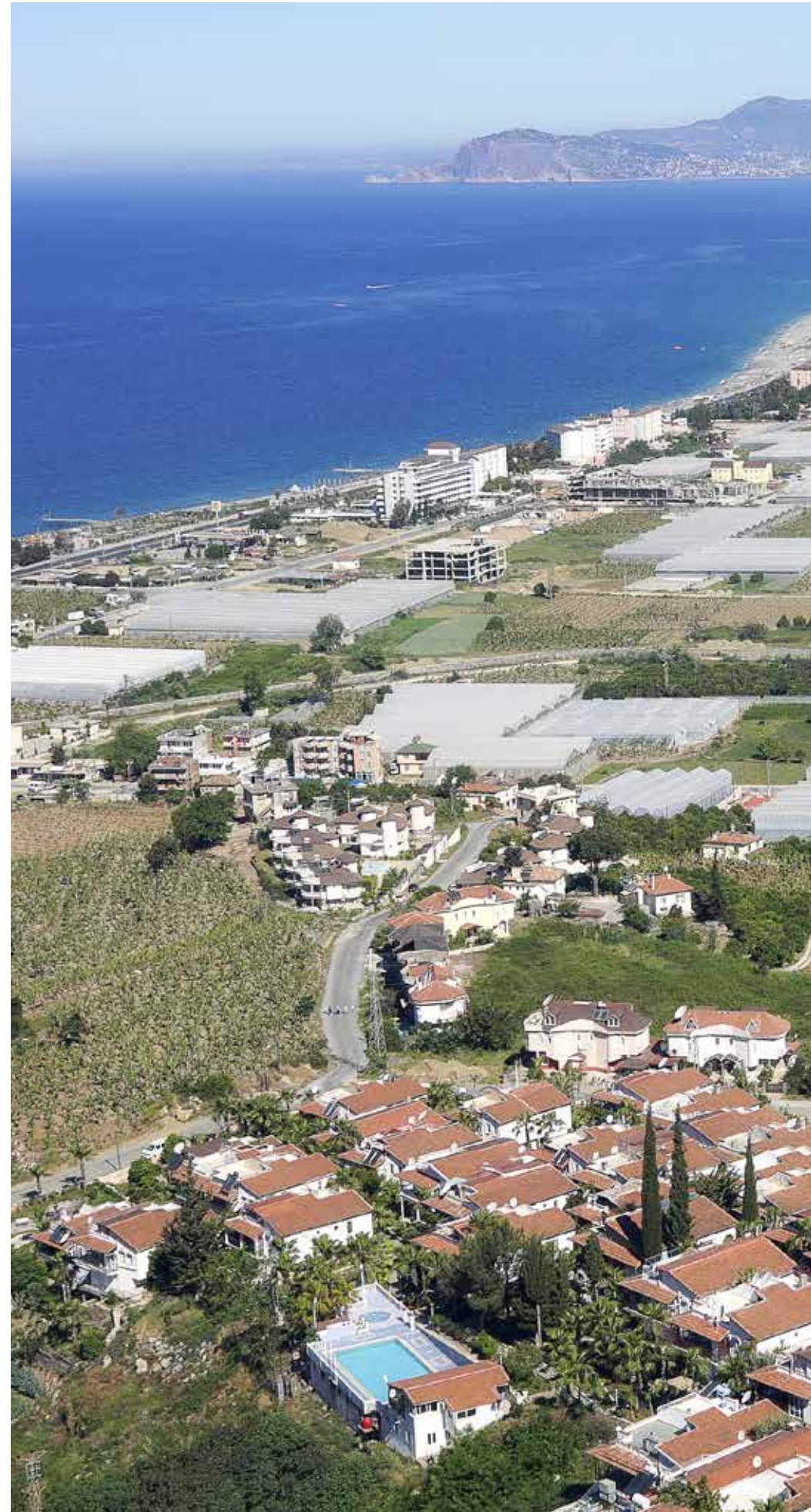






Company info

Toprak Construction & Development is a design/building company with over 30 years of experience. We built more than 1.000 quality apartments in the Mediterranean Region of Turkey. We offer our clients a high quality, convenient, Turkey, no-compromise design and construction solution that provides more control over the project's budget, delivers greater value, and can often result in a shorter time from start to finish for virtually any type of custom home, home remodeling or custom cabinetry project.





Modern design
Apartments

: 11.652 m² area

: 6.000 m² social area



One Bedroom Apartments	65 m ²
2 Bedroom Apartments	105 m ²
2 Bedroom Garden Dublex Apartments	130 m ²
2 Bedroom Penthouse Dublex Apartments	130 m ²
3 Bedroom Garden Dublex Apartments	200 m ²
3 Bedroom Penthouse Dublex Apartments	217 m ²



This superior luxury apartment project is located in beautiful Kargicak area of Alanya.

All apartments have a magnificent panoramic view of the sea and the majestic Taurus mountains!

The center of Alanya is only 14 km away, the International Airport 20 km and the sandy beaches 650m. There are 2 new golf courses approved and will be just 3 km from the Project.































5 "INFINITY" Outside Pools



1 Heated Indoor Swimming Pool



Sauna



Hamam



Cinema



Bowling



Fitness



7/24 h Doctor Ambulance Service

7/24 h Housekeeping Room Service

Private beach with regular transfer



Tennis



Squash



Football



Basketball



Massage Rooms



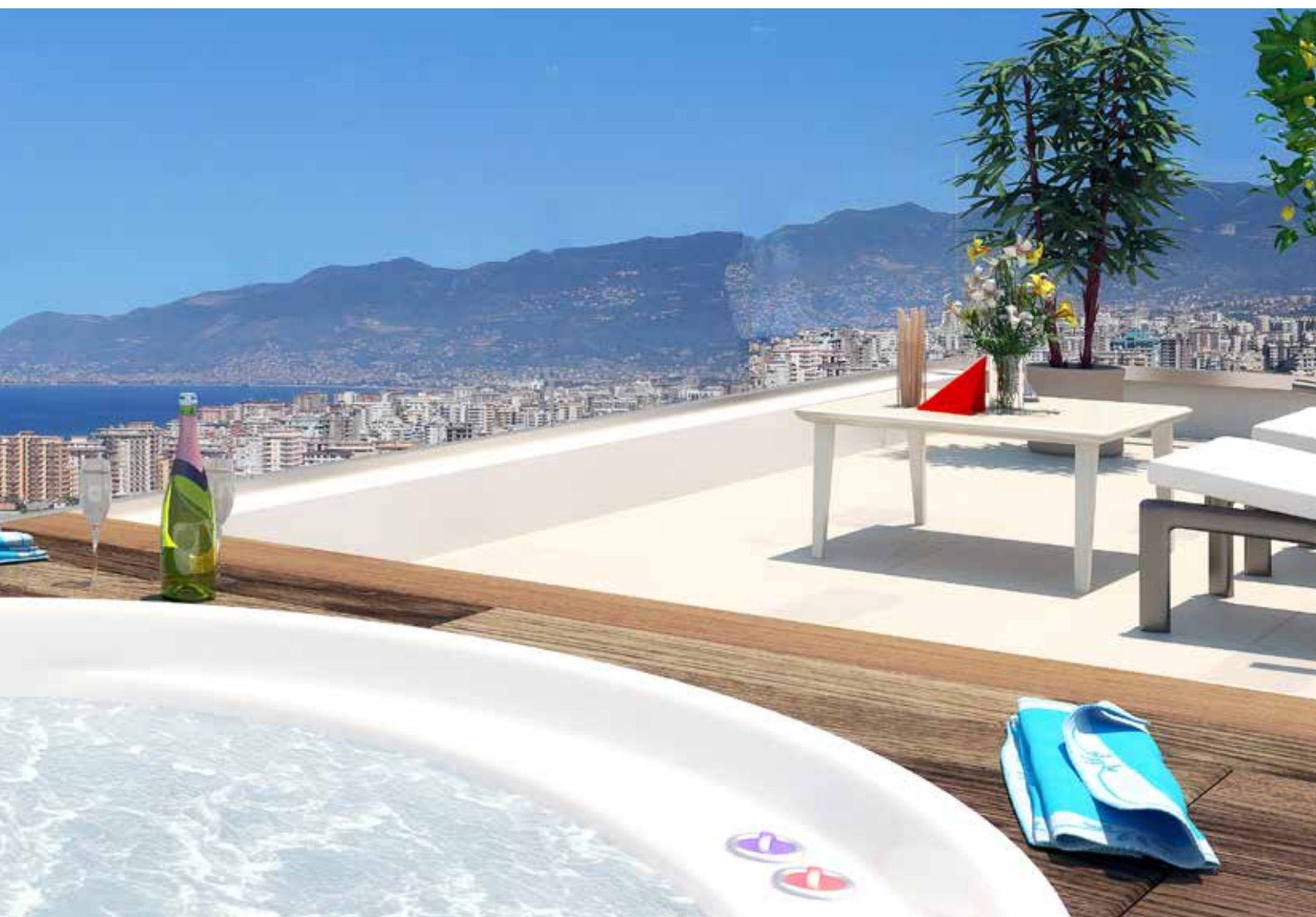
Luxury SPA-Center



Playroom / Playground



Children's playground and club



Shuttle Service

Generator

Water Tank



Airport Shuttle Transfer



Wi-Fi Internet



7/24 h Doctor/ Ambulance Service



Billiard



Car Hire / Taxi Service



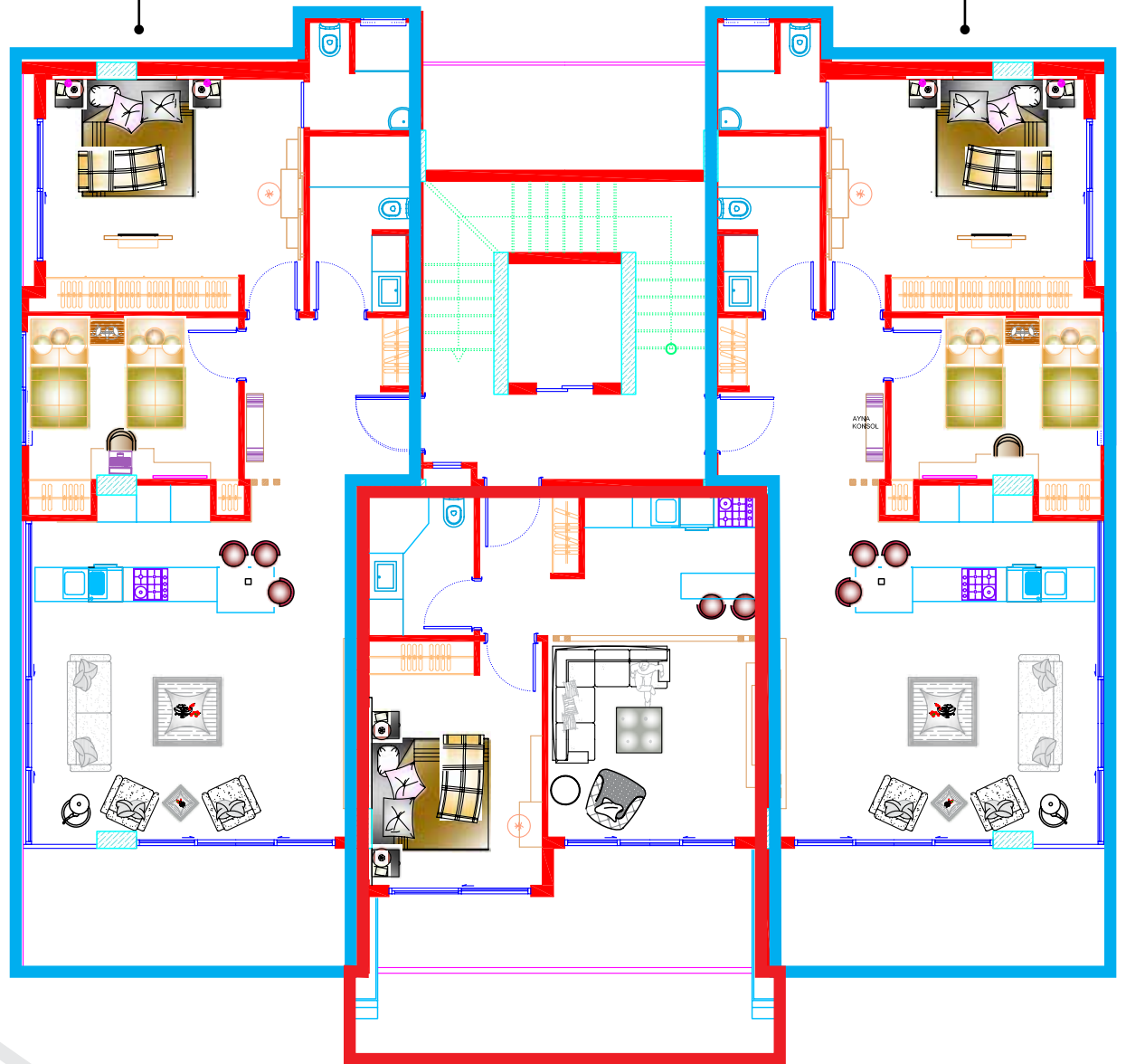
7/24 Hour Security



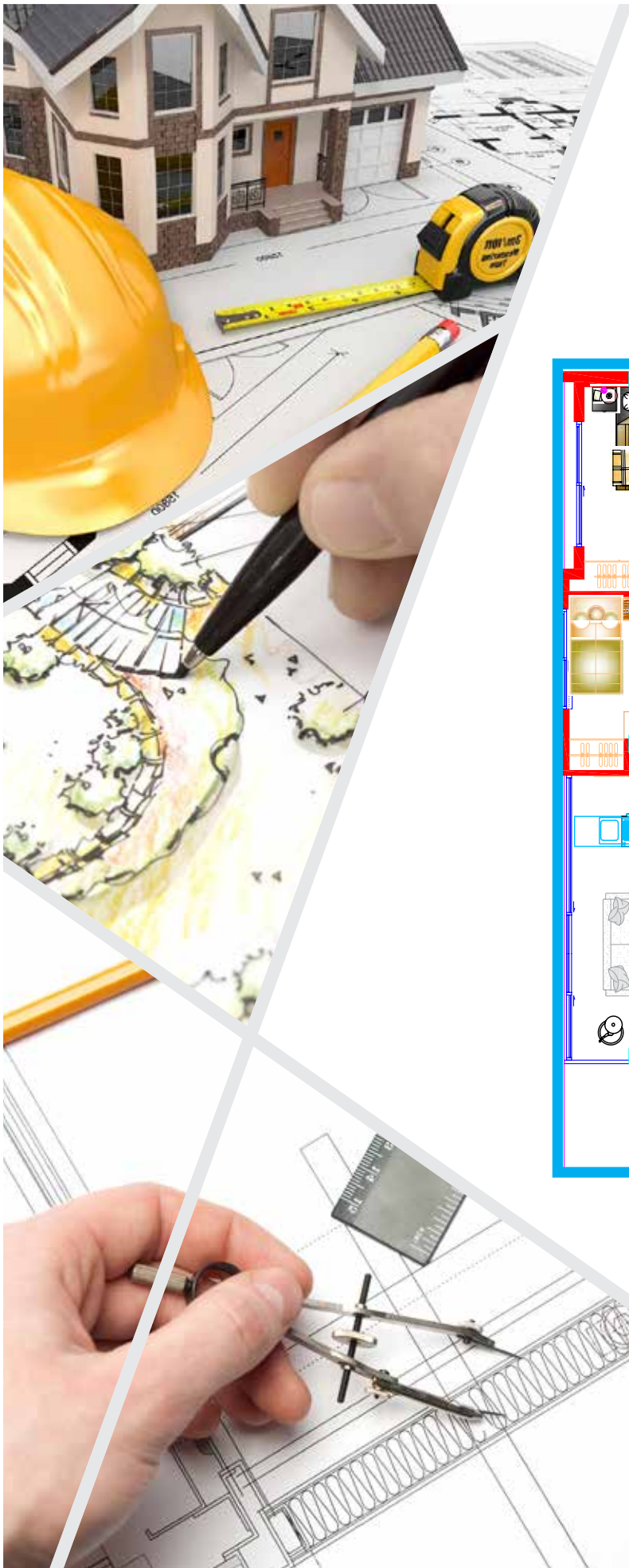
Outdoor / Indoor Car Park

NORMAL FLOOR PLAN

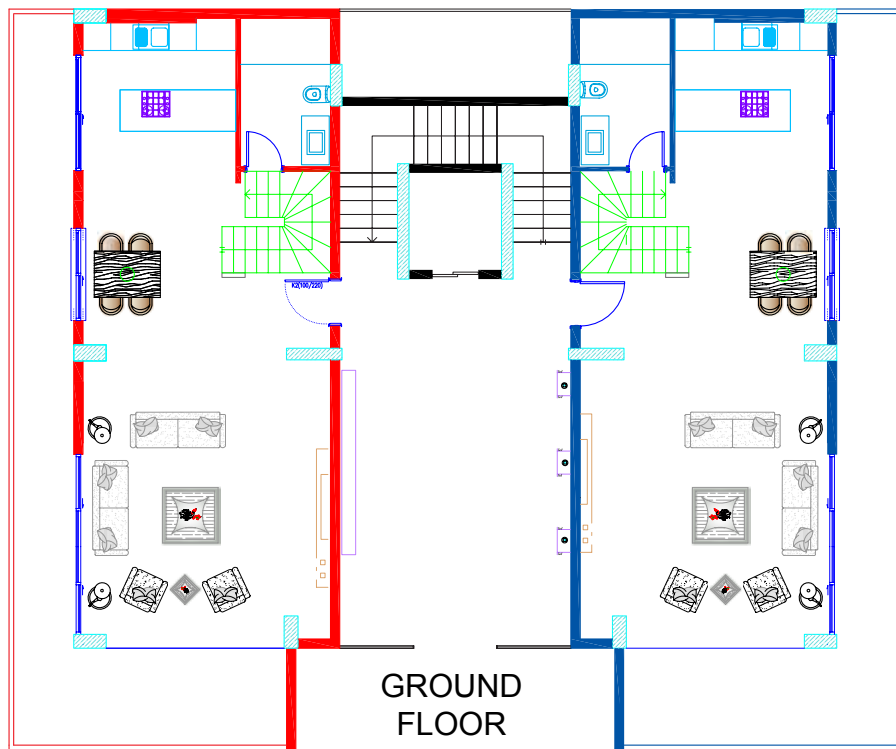
2+1: 105 m²



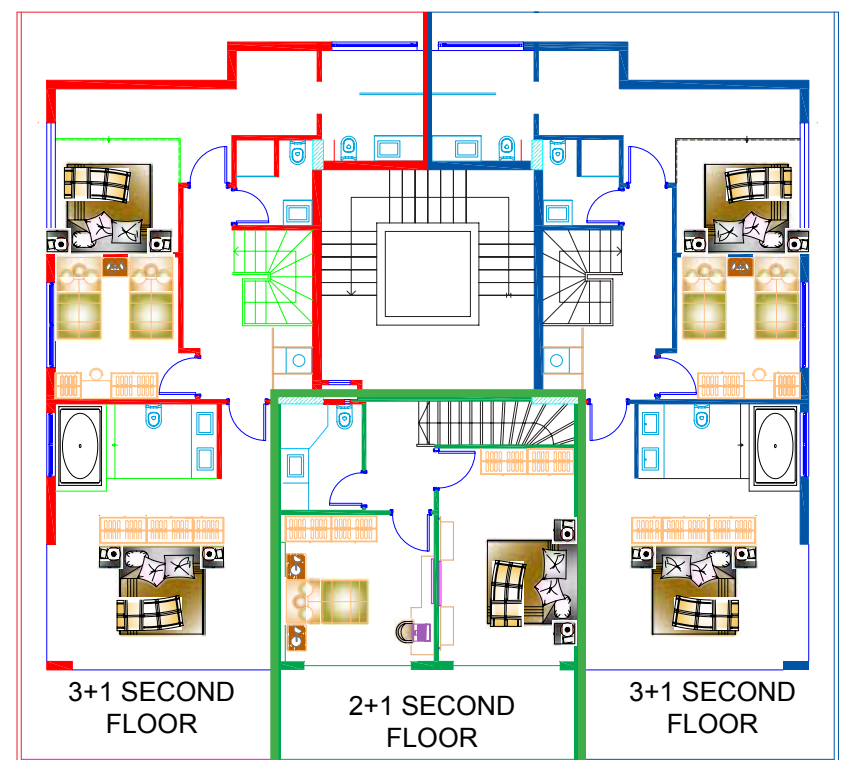
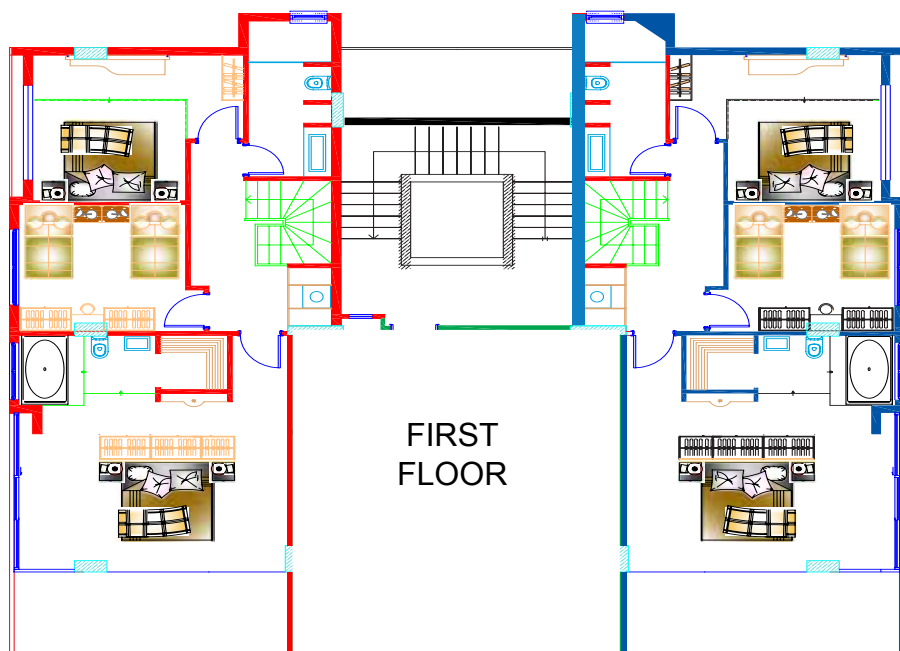
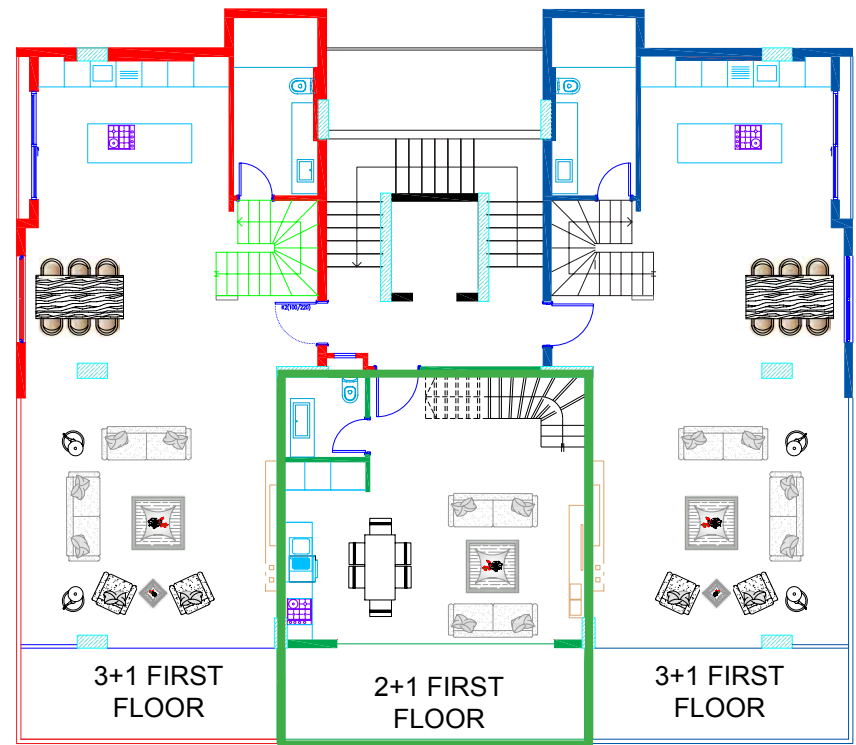
1+1: 65 m²



3+1 GARDEN DUPLEX FLOOR PLAN



PENTHOUSE DUPLEX FLOOR PLAN



■ ■ 3+1 GARDEN DUPLEX 200 m²

■ ■ 3+1 PENTHOUSE DUPLEX 217 m²

■ 2+1 PENTHOUSE DUPLEX 130 m²

