

PARK  
*Kestel, Alanya*

NOVIS



# NOVIS PARK™

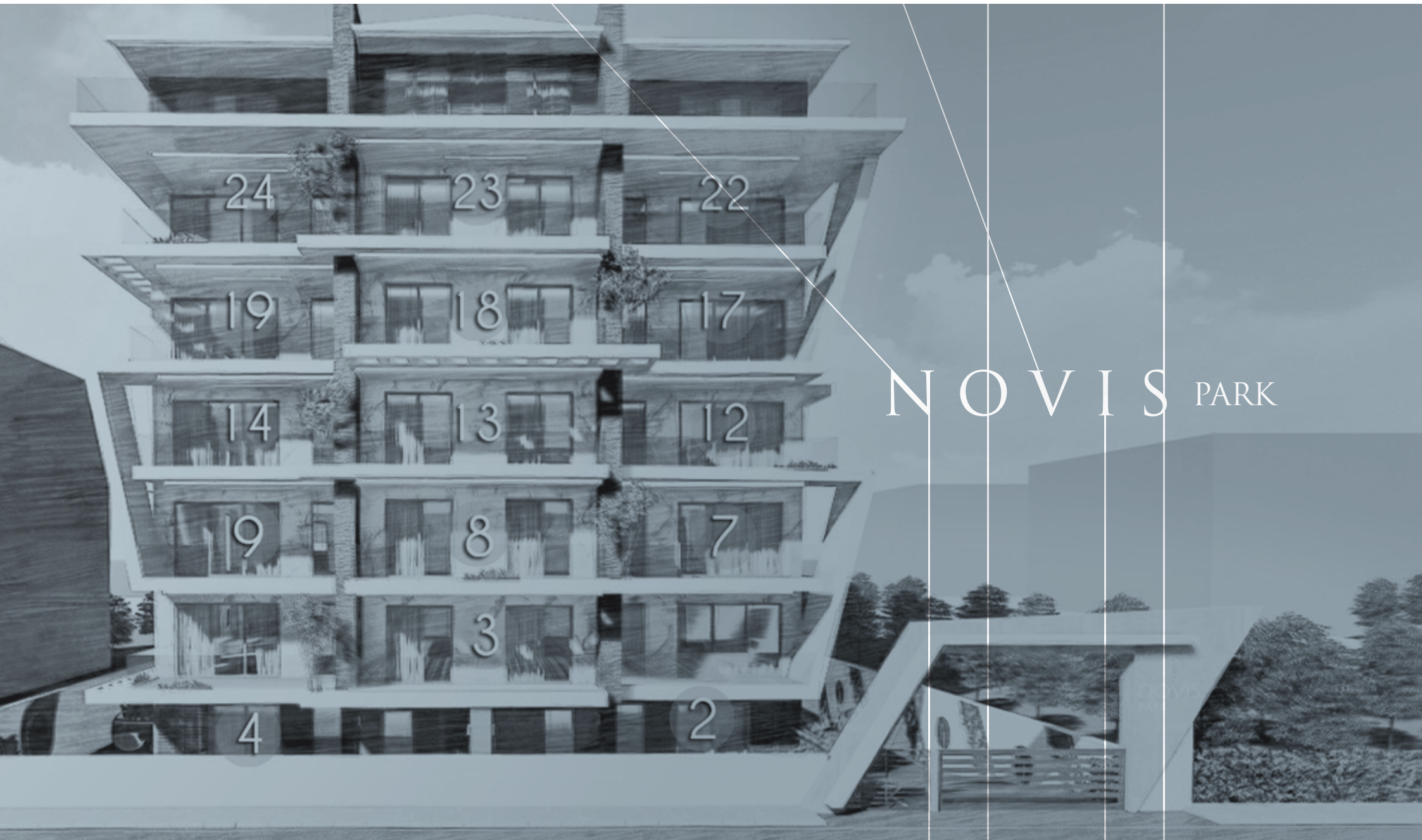
- 2 Units, 2+1 Patio Duplex (170 m<sup>2</sup>)
- 4 Units, 1+1 Flats (50 m<sup>2</sup>)
- 6 Adet, 2+1 Flat (75 m<sup>2</sup>)
- 3 Units, 2+1 Penthouse Duplex (103-173 m<sup>2</sup>)

- + All with park & sea view
- + Pool
- + 7/24 Security
- + Parking Lot
- + Sauna
- + Gym
- + Specially designed green areas





NOVIS PARK™



24

23

22

19

18

17

14

13

12

9

8

7

3

4

2

# NOVIS PARK

## NOVIS PARK™

- N°2** *Patio Duplex 2+1 ≈ 168m<sup>2</sup>*
- N°3** *Flat 1+1 ≈ 50 m<sup>2</sup>*
- N°4** *Patio Duplex 2+1 ≈ 170 m<sup>2</sup>*
- N°7** *Flat 2+1 ≈ 75m<sup>2</sup>*
- N°8** *Flat 1+1 ≈ 50 m<sup>2</sup>*
- N°9** *Flat 2+1 ≈ 75 m<sup>2</sup>*
- N°12** *Flat 2+1 ≈ 75 m<sup>2</sup>*
- N°13** *Flat 1+1 ≈ 50 m<sup>2</sup>*
- N°14** *Flat 2+1 ≈ 75 m<sup>2</sup>*
- N°17** *Flat 2+1 ≈ 75 m<sup>2</sup>*
- N°18** *Flat 1+1 ≈ 50m<sup>2</sup>*
- N°19** *Flat 2+1 ≈ 75 m<sup>2</sup>*
- N°22** *Penthouse Duplex 2+1 ≈ 173 m<sup>2</sup>*
- N°23** *Penthouse Duplex 2+1 ≈ 108 m<sup>2</sup>*
- N°24** *Penthouse Duplex 2+1 ≈ 173 m<sup>2</sup>*



# NOVIS PARK™ N°2

Patio Duplex 2+1 168 m<sup>2</sup>

## Ground Floor

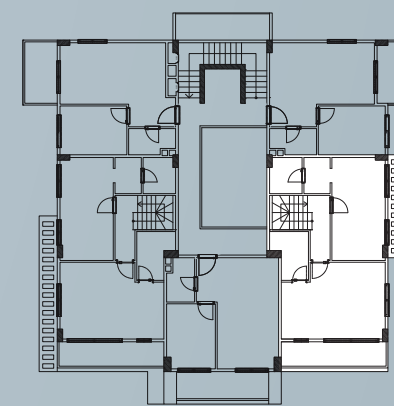
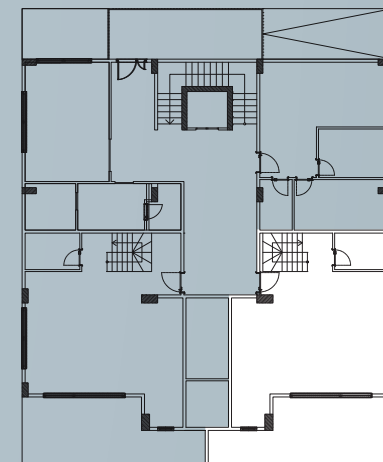
- 1 Balcony ≈ 25 m<sup>2</sup>
- 2 Kitchen & Living Room ≈ 48 m<sup>2</sup>
- 3 Bathroom ≈ 5 m<sup>2</sup>
- 4 Corridor & Stairs ≈ 10 m<sup>2</sup>

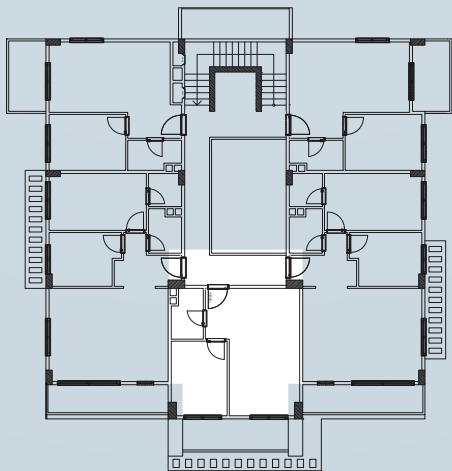
## Upper Floor

- 5 Balcony ≈ 8,5 m<sup>2</sup>
- 6 Master Bedroom ≈ 23 m<sup>2</sup>
- 7 Bedroom ≈ 17 m<sup>2</sup>
- 8 Dressing Room ≈ 3 m<sup>2</sup>
- 9 Bathroom ≈ 3,5 m<sup>2</sup>
- 10 Bathroom ≈ 4,5 m<sup>2</sup>
- 11 Corridor & Stairs ≈ 8,5 m<sup>2</sup>

Net Total 156 m<sup>2</sup>

**Gross Total 168 m<sup>2</sup>**





## NOVIS PARK™ N°3

Flat 1+1 50 m<sup>2</sup>

- 1 Balcony  $\approx 8,5 \text{ m}^2$
- 2 Kitchen & Living Room  $\approx 23,5 \text{ m}^2$
- 3 Bedroom  $\approx 10,5 \text{ m}^2$
- 4 Bathroom  $\approx 3,5 \text{ m}^2$

Net Total 46 m<sup>2</sup>

**Gross Total 50 m<sup>2</sup>**





# NOVIS PARK™ N°4

Patio Duplex 2+1 170 m<sup>2</sup>

## Ground Floor

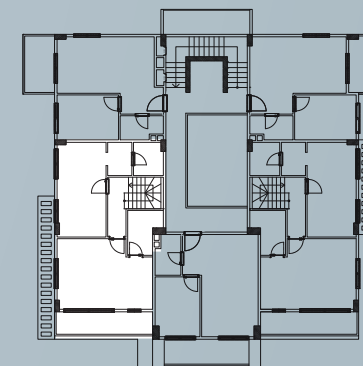
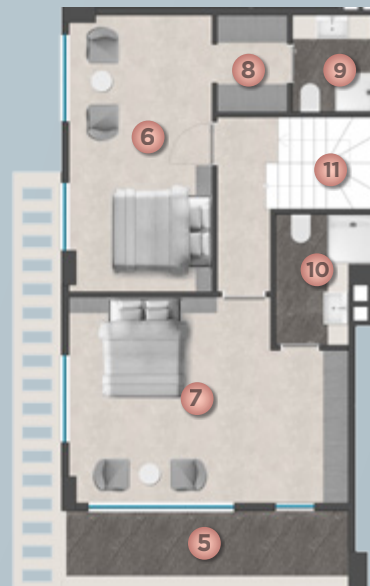
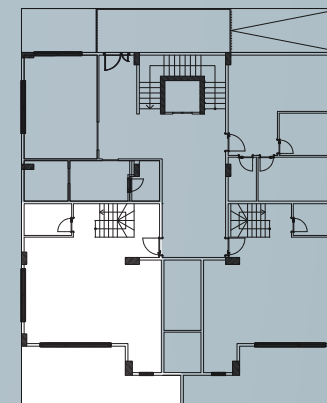
- 1 Balcony ≈ 25 m<sup>2</sup>
- 2 Kitchen & Living Room ≈ 48 m<sup>2</sup>
- 3 Bathroom ≈ 5 m<sup>2</sup>
- 4 Corridor & Stairs ≈ 14 m<sup>2</sup>

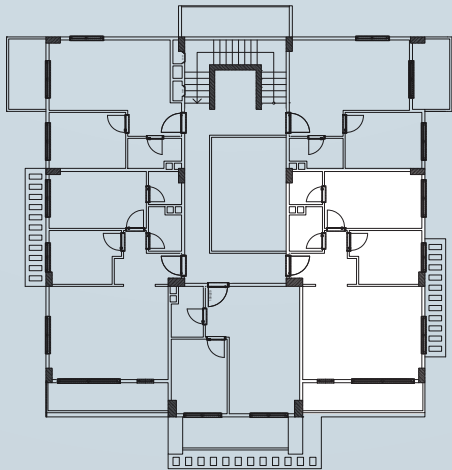
## Upper Floor

- 5 Balcony ≈ 8,5 m<sup>2</sup>
- 6 Bedroom ≈ 17 m<sup>2</sup>
- 7 Bedroom ≈ 23 m<sup>2</sup>
- 8 Dressing Room ≈ 3 m<sup>2</sup>
- 9 Bathroom ≈ 3,5 m<sup>2</sup>
- 10 Bathroom ≈ 4,5 m<sup>2</sup>
- 11 Corridor & Stairs ≈ 8,5 m<sup>2</sup>

Net Total 160 m<sup>2</sup>

**Gross Total 170 m<sup>2</sup>**





## NOVIS PARK™ N°7

Flat 2+1 75 m<sup>2</sup>

- |   |                       |                       |
|---|-----------------------|-----------------------|
| 1 | Balcony               | ≈ 8,5 m <sup>2</sup>  |
| 2 | Kitchen & Living Room | ≈ 26 m <sup>2</sup>   |
| 3 | Doorway               | ≈ 5 m <sup>2</sup>    |
| 4 | Bedroom               | ≈ 9 m <sup>2</sup>    |
| 5 | Bedroom               | ≈ 13,5 m <sup>2</sup> |
| 6 | Bathroom              | ≈ 2,5 m <sup>2</sup>  |
| 7 | Bathroom              | ≈ 3 m <sup>2</sup>    |

Net Total 67,5 m<sup>2</sup>

**Gross Total 75 m<sup>2</sup>**



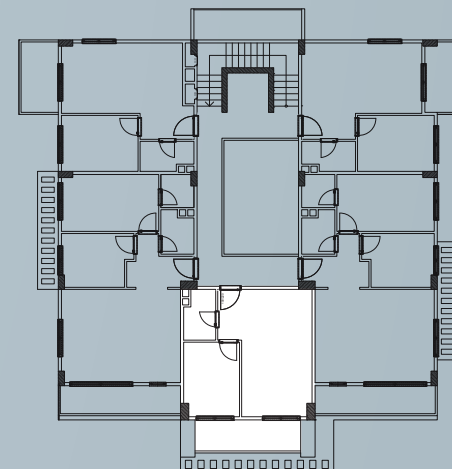
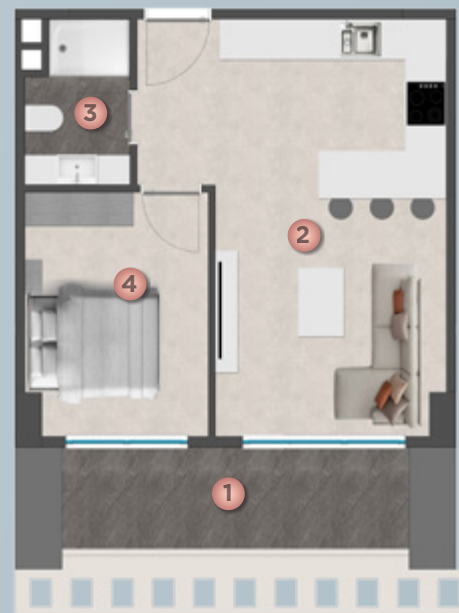
## NOVIS PARK™ N°8

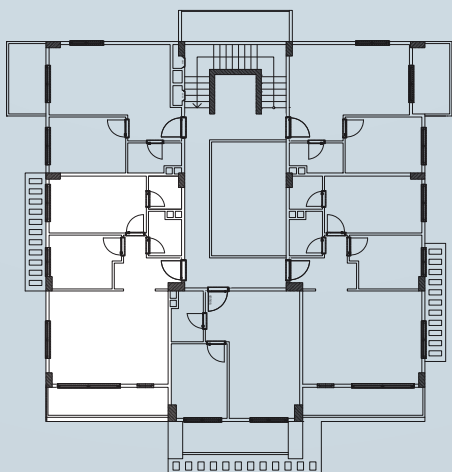
Flat 1+1 50 m<sup>2</sup>

- 1 Balcony ≈ 13 m<sup>2</sup>
- 2 Kitchen & Living Room ≈ 28 m<sup>2</sup>
- 3 Bathroom ≈ 4 m<sup>2</sup>
- 5 Bedroom ≈ 10,5 m<sup>2</sup>

Net Total 46 m<sup>2</sup>

**Gross Total 50 m<sup>2</sup>**





## NOVIS PARK™ N°9

Flat 2+1 75 m<sup>2</sup>

- 1 Balcony ≈ 8,5 m<sup>2</sup>
- 2 Kitchen & Living Room ≈ 26 m<sup>2</sup>
- 3 Doorway ≈ 5 m<sup>2</sup>
- 4 Bedroom ≈ 9 m<sup>2</sup>
- 5 Bedroom ≈ 13,5 m<sup>2</sup>
- 6 Bathroom ≈ 9 m<sup>2</sup>
- 7 Bathroom ≈ 13,5 m<sup>2</sup>

Net Total 67,5 m<sup>2</sup>

**Gross Total 75 m<sup>2</sup>**



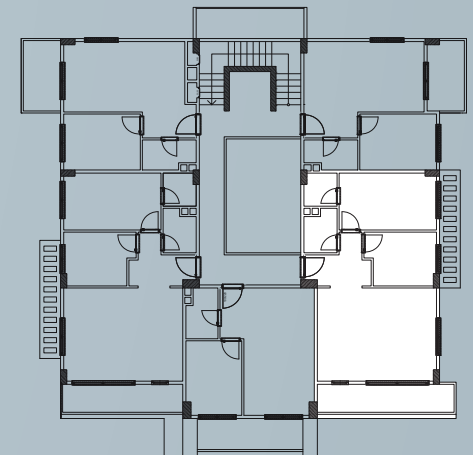
## NOVIS PARK™ N°12

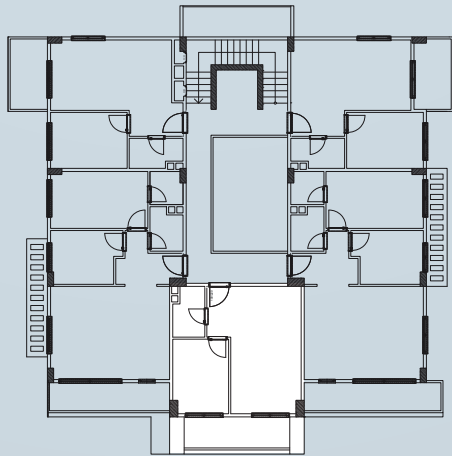
Flat 2+1 70 m<sup>2</sup>

- 1 Balcony ≈ 8,5 m<sup>2</sup>
- 2 Kitchen & Living Room ≈ 26 m<sup>2</sup>
- 3 Doorway ≈ 5 m<sup>2</sup>
- 4 Bedroom ≈ 9 m<sup>2</sup>
- 5 Bedroom ≈ 13,5 m<sup>2</sup>
- 6 Bathroom ≈ 9 m<sup>2</sup>
- 7 Bathroom ≈ 13,5 m<sup>2</sup>

Net Total 67,5 m<sup>2</sup>

**Gross Total 75 m<sup>2</sup>**





## NOVIS PARK™ N°13

Flat 1+1 50 m<sup>2</sup>

- 1 Balcony ≈ 8,5 m<sup>2</sup>
- 2 Kitchen & Living Room ≈ 23.5 m<sup>2</sup>
- 3 Bedroom ≈ 9 m<sup>2</sup>
- 4 Bathroom ≈ 3,5 m<sup>2</sup>

Net Total 46 m<sup>2</sup>

**Gross Total 50 m<sup>2</sup>**



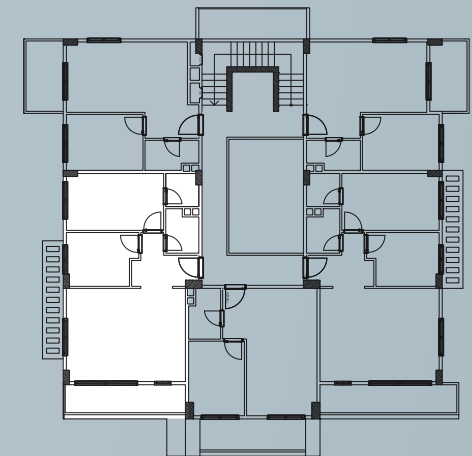
## NOVIS PARK™ N°14

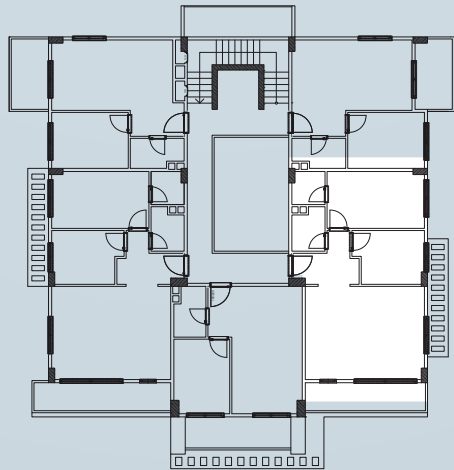
Flat 2+1 75 m<sup>2</sup>

- |   |                       |                       |
|---|-----------------------|-----------------------|
| 1 | Balcony               | ≈ 8,5 m <sup>2</sup>  |
| 2 | Doorway               | ≈ 5 m <sup>2</sup>    |
| 3 | Kitchen & Living Room | ≈ 26 m <sup>2</sup>   |
| 4 | Bedroom               | ≈ 9 m <sup>2</sup>    |
| 5 | Bedroom               | ≈ 13,5 m <sup>2</sup> |
| 6 | Bathroom              | ≈ 3 m <sup>2</sup>    |
| 7 | Bathroom              | ≈ 2,5 m <sup>2</sup>  |

Net Total 67,5 m<sup>2</sup>

**Gross Total 75 m<sup>2</sup>**





## NOVIS PARK™ N°17

Flat 2+1 75 m<sup>2</sup>

- |   |                       |                       |
|---|-----------------------|-----------------------|
| 1 | Balcony               | ≈ 8,5 m <sup>2</sup>  |
| 2 | Doorway               | ≈ 5 m <sup>2</sup>    |
| 3 | Kitchen & Living Room | ≈ 26 m <sup>2</sup>   |
| 4 | Bedroom               | ≈ 9 m <sup>2</sup>    |
| 5 | Bedroom               | ≈ 13,5 m <sup>2</sup> |
| 6 | Bathroom              | ≈ 3 m <sup>2</sup>    |
| 7 | Bathroom              | ≈ 2,5 m <sup>2</sup>  |

Net Total 67,5 m<sup>2</sup>

**Gross Total 75 m<sup>2</sup>**





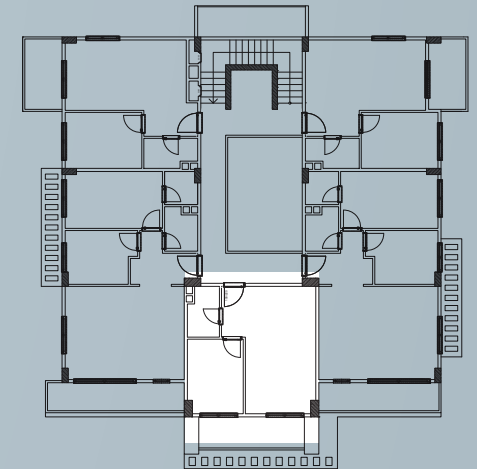
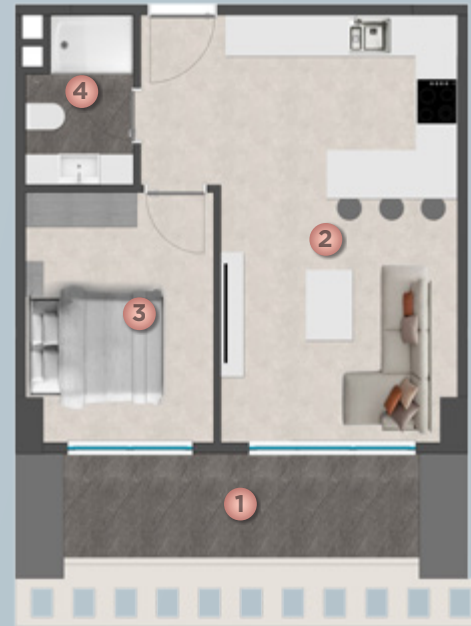
## NOVIS PARK™ N°18

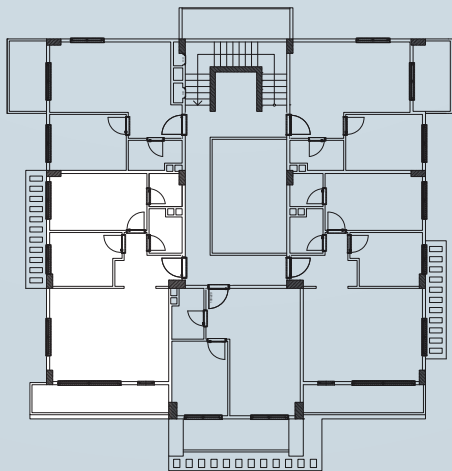
Flat 1+1 50 m<sup>2</sup>

- 1 Balcony ≈ 8,5 m<sup>2</sup>
- 2 Kitchen & Living Room ≈ 23,5 m<sup>2</sup>
- 3 Bedroom ≈ 10,5 m<sup>2</sup>
- 4 Bathroom ≈ 3,5 m<sup>2</sup>

Net Total 46 m<sup>2</sup>

**Gross Total 50 m<sup>2</sup>**





## NOVIS PARK™ N°19

Flat 2+1 75 m<sup>2</sup>

- |   |                       |                       |
|---|-----------------------|-----------------------|
| 1 | Balcony               | ≈ 9,5 m <sup>2</sup>  |
| 2 | Doorway               | ≈ 5 m <sup>2</sup>    |
| 3 | Kitchen & Living Room | ≈ 26 m <sup>2</sup>   |
| 4 | Bedroom               | ≈ 9 m <sup>2</sup>    |
| 5 | Bedroom               | ≈ 13,5 m <sup>2</sup> |
| 6 | Bathroom              | ≈ 3 m <sup>2</sup>    |
| 7 | Bathroom              | ≈ 2,5 m <sup>2</sup>  |

Net Total 68,5 m<sup>2</sup>

**Gross Total 75 m<sup>2</sup>**



# NOVIS PARK™ N°22

Penthouse Duplex 2+1 173 m<sup>2</sup>

## Ground Floor

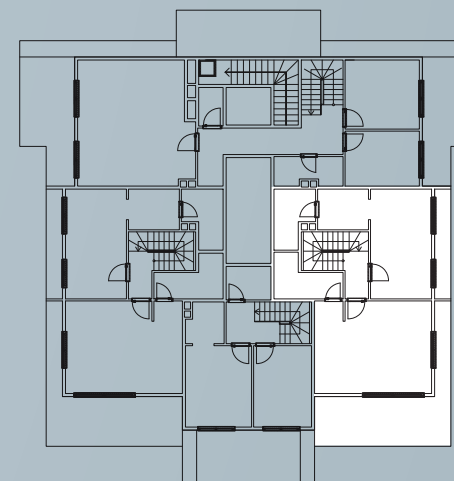
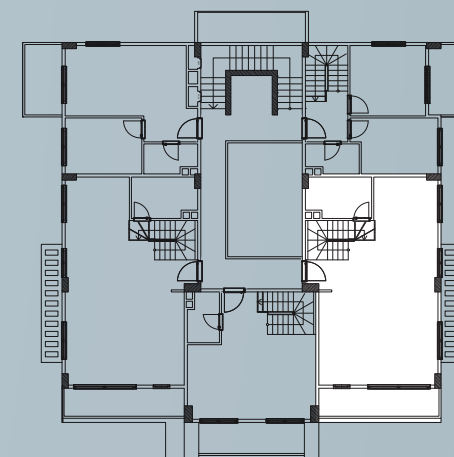
- 1 Balcony ≈ 8,5 m<sup>2</sup>
- 2 Kitchen ≈ 12 m<sup>2</sup>
- 3 Salon ≈ 32 m<sup>2</sup>
- 4 Bathroom ≈ 6,5 m<sup>2</sup>
- 5 Corridor & Stairs ≈ 12 m<sup>2</sup>

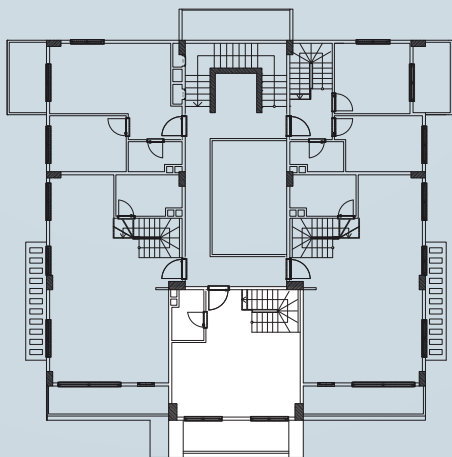
## Upper Floor

- 6 Teras ≈ 25 m<sup>2</sup>
- 7 Bedroom ≈ 26 m<sup>2</sup>
- 8 Dressing Room ≈ 5 m<sup>2</sup>
- 9 Bedroom ≈ 16,5 m<sup>2</sup>
- 10 Bathroom ≈ 5,5 m<sup>2</sup>
- 11 Bathroom ≈ 5 m<sup>2</sup>
- 12 Corridor & Stairs ≈ 8,5 m<sup>2</sup>

Net Total 162,5m<sup>2</sup>

**Gross Total 173 m<sup>2</sup>**



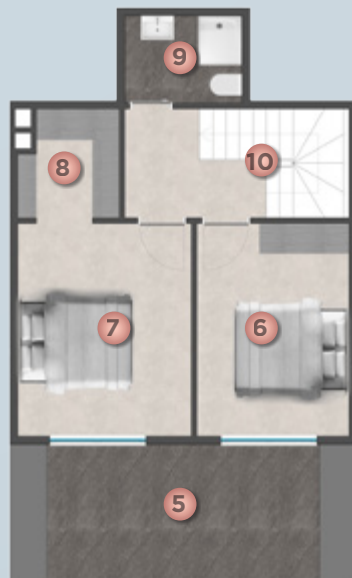
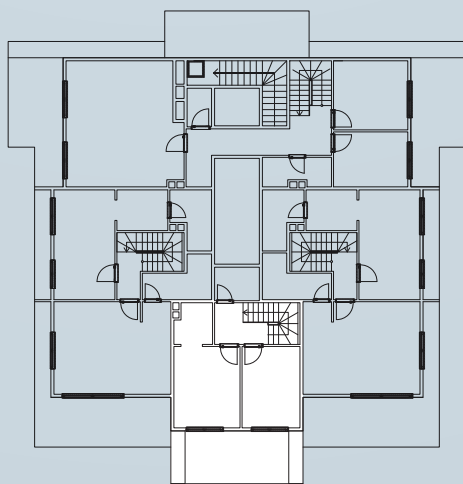


## NOVIS PARK™ N°23

Penthouse Duplex 2+1 108 m<sup>2</sup>

### Ground Floor

- 1 Balcony ≈ 8,5 m<sup>2</sup>
- 2 Kitchen & Living Room ≈ 24 m<sup>2</sup>
- 3 Bathroom ≈ 4 m<sup>2</sup>
- 4 Corridor & Stairs ≈ 9 m<sup>2</sup>



### Upper Floor

- 5 Teras ≈ 13,5 m<sup>2</sup>
- 6 Bedroom ≈ 11,5 m<sup>2</sup>
- 7 Bedroom ≈ 13,5 m<sup>2</sup>
- 8 Dressing Room ≈ 4 m<sup>2</sup>
- 9 Bathroom ≈ 4 m<sup>2</sup>
- 10 Corridor & Stairs ≈ 8,5 m<sup>2</sup>

Net Total 100,5 m<sup>2</sup>

**Gross Total 108 m<sup>2</sup>**



# NOVIS PARK™ N°24

Penthouse Duplex 2+1 173 m<sup>2</sup>

## Ground Floor

- 1 Balcony ≈ 8,5 m<sup>2</sup>
- 2 Kitchen ≈ 12 m<sup>2</sup>
- 3 Salon ≈ 32 m<sup>2</sup>
- 4 Bathroom ≈ 6,5 m<sup>2</sup>
- 5 Corridor & Stairs ≈ 12 m<sup>2</sup>

## Upper Floor

- 6 Teras ≈ 25 m<sup>2</sup>
- 7 Bedroom ≈ 26 m<sup>2</sup>
- 8 Dressing Room ≈ 5 m<sup>2</sup>
- 9 Bedroom ≈ 16,5 m<sup>2</sup>
- 10 Bathroom ≈ 5,5 m<sup>2</sup>
- 11 Bathroom ≈ 5 m<sup>2</sup>
- 12 Corridor & Stairs ≈ 8,5 m<sup>2</sup>

Net Total 162,5 m<sup>2</sup>

**Gross Total 173 m<sup>2</sup>**

